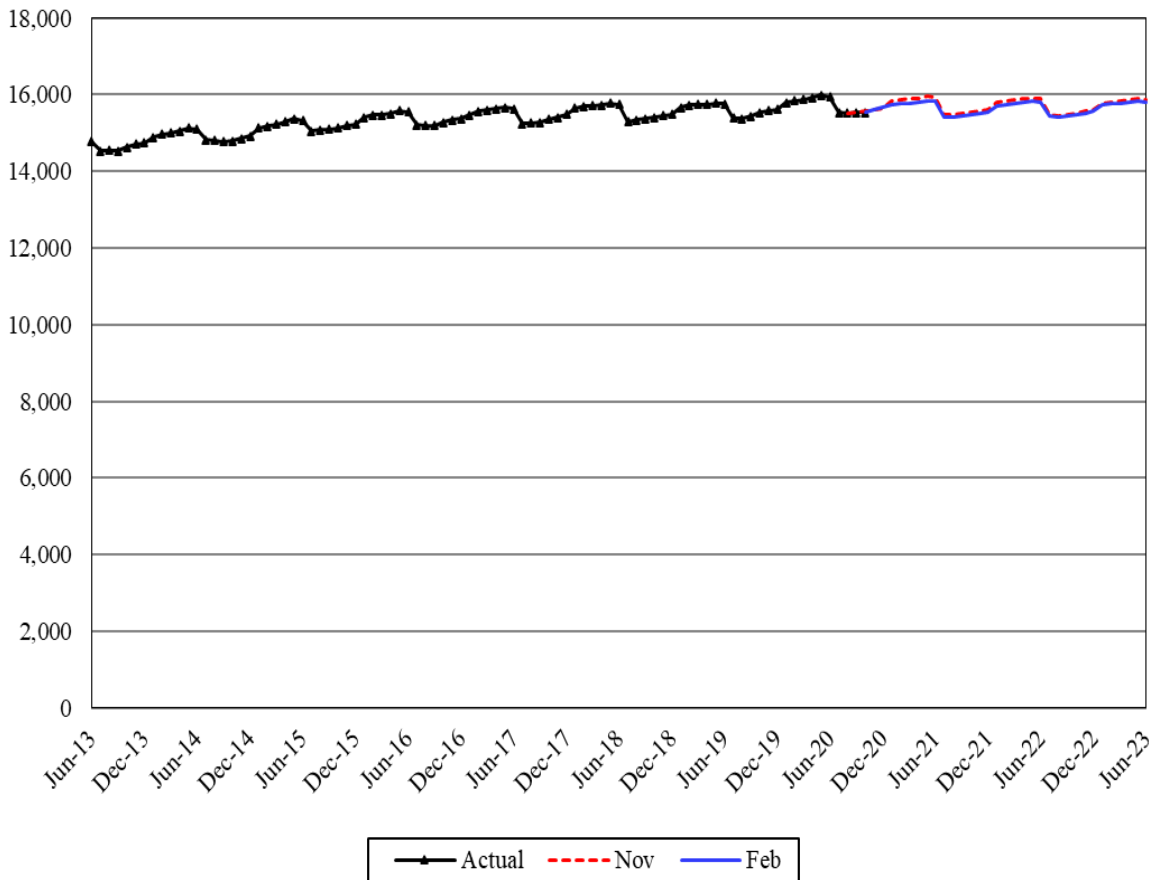


Adoption Support – Maintenance Payments



The Adoption Support Maintenance Payment (ASMP) caseload forecast is a forecast of those eligible adoptive families receiving monthly adoption support maintenance payments.

Forecast Comparisons (Fiscal Year Averages)				
Fiscal Year	Nov-20 Forecast	Feb-21 Forecast	Nov to Feb Difference	Percent Difference
2021	15,732	15,681	-51	-0.3%
2022	15,698	15,628	-70	-0.4%
2023	15,684	15,636	-48	-0.3%

The February 2021 forecast is 51 cases or 0.3 percent lower than the November 2020 forecast for FY 2021 and, on average, 59 cases or 0.4 percent lower for the 2021-23 Biennium.

Tracking the Current Forecast

	Nov-20 Forecast	Actual	Variance	Percent Variance
Aug-20	15,503	15,517	14	0.1%
Sep-20	15,532	15,544	12	0.1%
Oct-20	15,572	15,544	-28	-0.2%

Actuals have been tracking, on average, 2 cases or a negligible percent below the November 2020 forecast for the past three months.

The COVID-19 pandemic prevented the usual spike in adoption cases every January from happening after National Adoption Month (NAM) in November. The February 2021 forecast updated the forecasting model to make a one-time adjustment for this January to account for the COVID-19 impact.

Fiscal Year Caseload Change

	Fiscal Year	Caseload	Change from Prior Year	Percent Change
<i>Actual</i>	2014	14,819		
	2015	15,043	224	1.5%
	2016	15,317	274	1.8%
	2017	15,432	115	0.8%
	2018	15,530	98	0.6%
	2019	15,566	36	0.2%
	2020	15,693	127	0.8%
<i>Forecast</i>	2021	15,681	-12	-0.1%
	2022	15,628	-53	-0.3%
	2023	15,636	8	0.1%

Caseload growth had been stable before FY 2017 but has been slowing down since then.

Risks to the Forecast

Risks to the Adoption Support forecast are moderate.