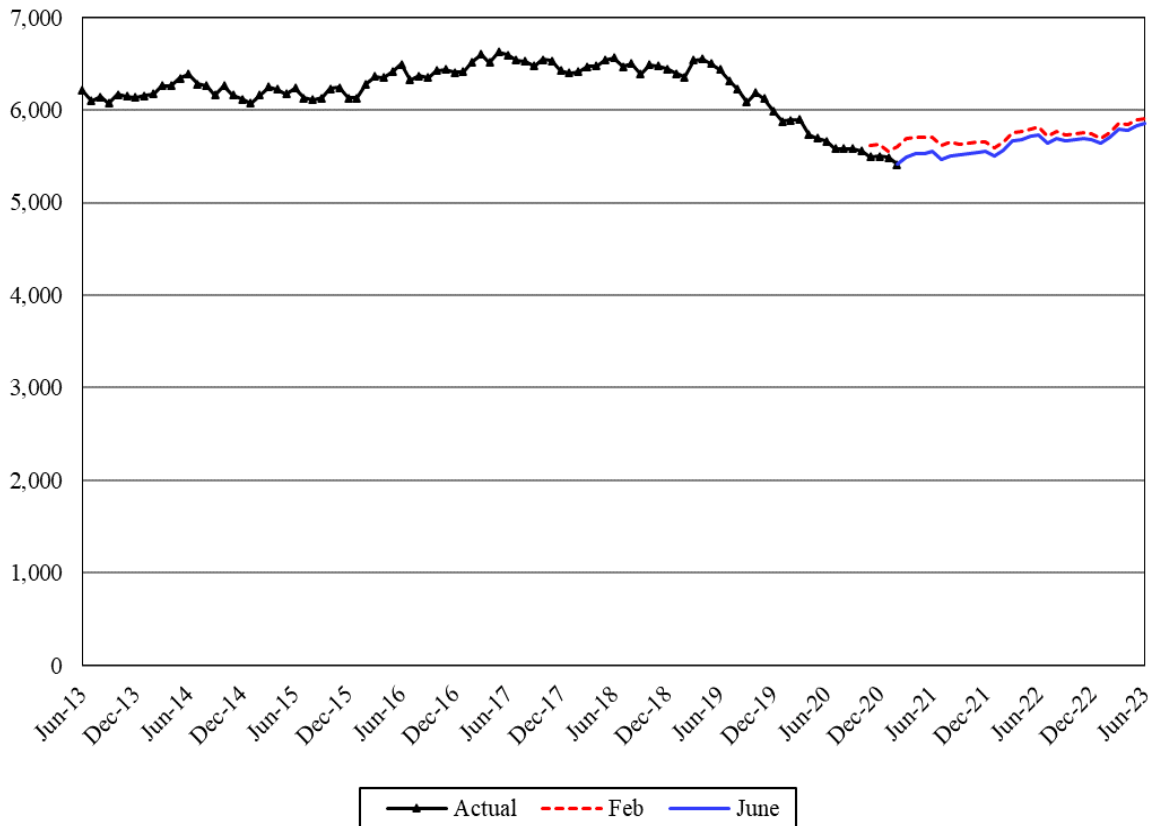


**Licensed Foster Care**



The Licensed Foster Care (LFC) caseload is a forecast of the number of children in licensed foster care during a calendar month. Financial assistance for licensed foster care includes a monthly stipend, medical care, and a variety of additional services. This caseload has two components – Basic Foster Care & Receiving Care (BFCRC) and Behavioral Rehabilitation Services (BRS).

**Forecast Comparisons (Fiscal Year Averages)**

Fiscal Year	Feb-21 Forecast	Jun-21 Forecast	Feb to Jun Difference	Percent Difference
2021	5,627	5,526	-101	-1.8%
2022	5,687	5,581	-106	-1.9%
2023	5,785	5,723	-61	-1.1%

The June 2021 forecast is 101 cases or 1.8 percent lower than the February 2021 forecast for FY 2021 and, on average, 84 cases or 1.5 percent lower for the 2021-23 Biennium.

### Tracking the Current Forecast

	Feb-21 Forecast	Actual	Variance	Percent Variance
Nov-20	5,618	5,494	-125	-2.2%
Dec-20	5,627	5,501	-127	-2.3%
Jan-21	5,550	5,489	-61	-1.1%
Feb-21	5,606	5,412	-194	-3.5%

Actuals have been tracking, on average, 127 cases or 2.3 percent below the February 2021 forecast for the past four months.

The BFCRC caseload has experienced a pre-COVID-19 decline since March 2019, and the COVID-19 pandemic further amplified the caseload decline. Recently, it appears that the caseload has reached a turning point and the June forecast incorporates this as an assumption. For BRS, the October 2019 rate increase resulted in a temporary capacity increase, but then resumed to the pre-rate increase caseload trend. The LFC forecast assumes September 2021 as the ‘back to normal’ month.

### Fiscal Year Caseload Change

	Fiscal Year	Caseload	Change from Prior Year	Percent Change
Actual	2014	6,197		
	2015	6,198	0	0.0%
	2016	6,251	53	0.9%
	2017	6,467	216	3.5%
	2018	6,493	25	0.4%
	2019	6,462	-30	-0.5%
	2020	5,976	-487	-7.5%
Forecast	2021	5,526	-450	-7.5%
	2022	5,581	56	1.0%
	2023	5,723	142	2.5%

Caseload growth has not been stable over the past several years, which is a challenge for this forecast.

#### *Risks to the Forecast*

Risks to the Licensed Foster Care caseload forecast are high because of the uncertainty of the COVID-19 impact and the uncertainty around the reasons for the historical pre-COVID caseload decline.