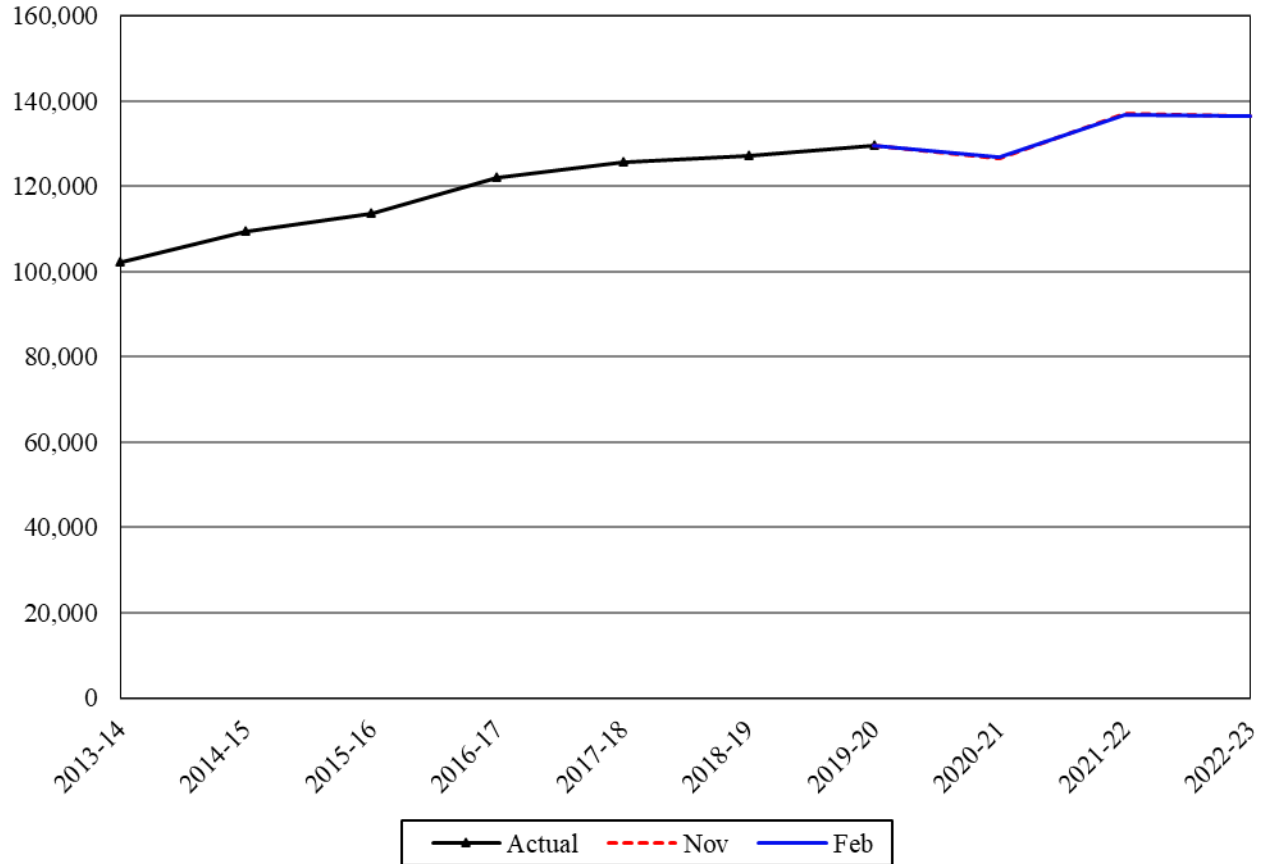


Education
Common School Bilingual Education

Caseload Forecast Council
 February 12, 2021

Bilingual Education Average Annual Enrollment (HC)



The Common School Bilingual Education caseload forecast consists of students enrolled in the Transitional Bilingual Instructional Program (TBIP). The goal of the TBIP program is to develop a student’s proficiency in the English language.

Forecast Comparisons (Academic Year Average)

Academic Year	Nov-20 Forecast	Feb-21 Forecast	Nov to Feb Difference	Percent Difference
2020-21	126,447	126,948	501	0.4%
2021-22	136,917	136,830	-87	-0.1%
2022-23	136,440	136,355	-85	-0.1%

The TBIP February forecast is 0.4 percent higher than the November forecast for the 2020-21 academic year and is on par with the November forecast for the 2021-23 Biennium.

Forecast Contact:
 Paula Moore
 360-664-9376
 paula.moore@cfc.wa.gov

Tracking the Current Forecast

	Nov-20 Forecast	Actual	Variance	Percent Variance
Oct-20	123,284	123,760	476	0.4%
Nov-20	125,359	126,235	876	0.7%
Dec-20	126,169	126,606	437	0.3%
Jan-21	126,365	126,800	435	0.3%

Actuals for TBIP are tracking 0.4 percent above the November forecast. At the grade level, TBIP K-6 is 0.9 percent above forecast while TBIP 7-12 is 0.5 percent below forecast.

Academic Year Caseload Change

	Academic Year	Caseload	Change from Prior Year	Percent Change
Actual	2013-14	102,281		
	2014-15	109,516	7,236	7.1%
	2015-16	113,676	4,160	3.8%
	2016-17	122,074	8,398	7.4%
	2017-18	125,775	3,701	3.0%
	2018-19	127,154	1,379	1.1%
	2019-20	129,601	2,447	1.9%
Forecast	2020-21	126,948	-2,653	-2.0%
	2021-22	136,830	9,882	7.8%
	2022-23	136,355	-475	-0.3%

The TBIP forecast is sensitive to testing changes, the state's job growth, US immigration policies, and families moving to Washington State from other US states. The 2020-21 caseload decline is due to concerns about COVID-19 and remote/hybrid schooling. For 2021-22 and 2022-23, the TBIP caseload will mirror the overall common schools enrollment trends: an increase in 2021-22 due to rebounding enrollment, followed by flat enrollment in 2022-23. It is expected that students will stay in the program longer due to the combined impacts of the spring 2020 school closures and remote/hybrid schooling in the 2020-21 school year.

After Exit Enrollment Courtesy Forecast

Academic Year	Nov-20 Forecast	Feb-21 Forecast	Nov to Feb Difference	Percent Difference
2020-21	29,801	29,651	-150	-0.5%
2021-22	27,851	26,812	-1,039	-3.7%
2022-23	31,361	30,308	-1,053	-3.4%

The After Exit program provides an additional two years of funding for students who exit the TBIP program after demonstrating proficiency on the spring assessment. The 2020-21 February forecast is 0.5 percent below the November forecast for 2020-21, and 3.5 percent lower for the 2021-23 Biennium due to (1) fewer students testing in 2020-21 and (2) lower overall exit assumptions for students.

Risks to the Forecast

Risks to the Bilingual Education forecast are high, particularly with the uncertainty of COVID-19, the economic downturn and recovery, and changes in immigration policy. Changes in any of these elements as well as testing policy influence the caseload.

Forecast Contact:
 Paula Moore
 360-664-9376
 paula.moore@efc.wa.gov