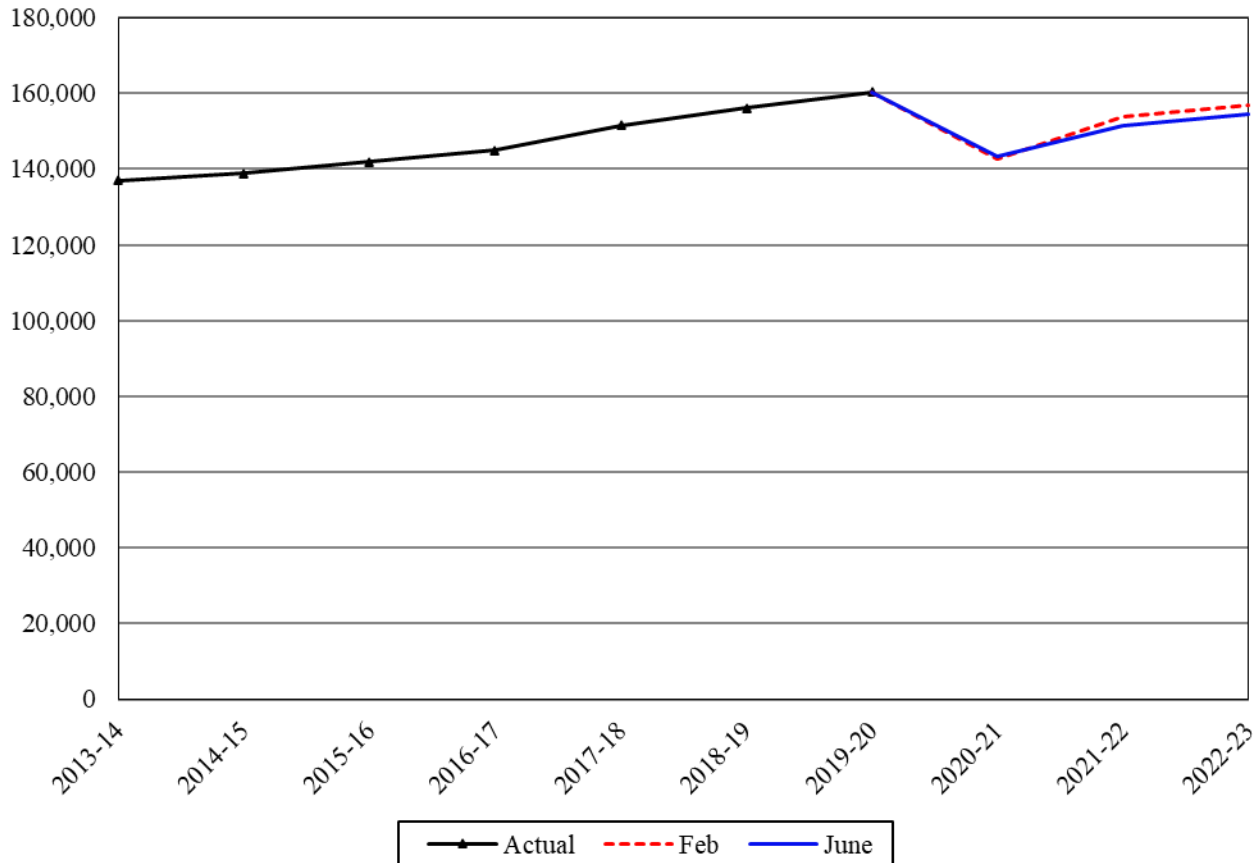


Common School Special Education

Caseload Forecast Council
June 16, 2021

Special Education Average Annual Enrollment (HC) (Age 3-PreK and State Funded Age K-21)



The Common School Special Education forecast consists of two programs: a separately funded Age 3-Pre-Kindergarten program, and the Age K-21 school-based Special Education program, indexed to 13.5 percent of each school district's total full-time equivalent enrollment. Up until the 2020-21 school year, Special Education also included the Age 0-2 Infant and Toddler program.

Forecast Comparisons (Academic Year Averages)

Academic Year	Feb-21 Forecast	June-21 Forecast	Feb to June Difference	Percent Difference
2020-21	142,727	143,463	736	0.5%
2021-22	153,851	151,408	-2,443	-1.6%
2022-23	156,866	154,457	-2,409	-1.5%

The Special Education June forecast is 0.5 percent higher than the February forecast for the 2020-21 academic year and is 1.6 percent lower than the February forecast for the 2021-23 Biennium due to adjusted growth assumptions.

Forecast Contact:
Paula Moore
360-664-9376
paula.moore@cfc.wa.gov

Tracking the Current Forecast

	Feb-21 Forecast	Actual	Variance	Percent Variance
Feb-21	150,442	150,317	-125	-0.1%
Mar-21	151,094	151,413	319	0.2%
Apr-21	152,697	153,020	322	0.2%
May-21	154,115	153,666	-449	-0.3%

*Special education reported program headcount (Age 3-21)

The reported Special Education enrollment is tracking close to the February forecast. However, Special Education 3-PreK enrollment is tracking 1.9 percent below forecast. The tracking data is of reported Special Education enrollment. These numbers are slightly different from the forecasted caseload which, for those in the K-21 program, includes only students funded under the Special Education basic funding target.

Academic Year Caseload Change

	Academic Year	Caseload	Change from Prior Year	Percent Change
Actual	2013-14	136,983		
	2014-15	138,909	1,926	1.4%
	2015-16	141,992	3,083	2.2%
	2016-17	145,006	3,014	2.1%
	2017-18	151,515	6,509	4.5%
	2018-19	156,201	4,686	3.1%
	2019-20	160,361	4,160	2.7%
Forecast	2020-21	143,463	-16,898	-10.5%
	2021-22	151,408	7,945	5.5%
	2022-23	154,457	3,049	2.0%

The Special Education forecast declined in 2020-21 for two reasons. First, the state-funded Birth to Age 2 Special Education program shifted from OSPI to the Early Support for Infant and Toddlers program at DCYF. This reduced the 2020-21 forecast by 10,381. Second, Special Education enrollment declined due to concerns about COVID-19 and remote/hybrid schooling.

The Special Education enrollment is expected to rebound in 2021-22, both for 3-PreK and K-age 21, consistent with the assumptions in the Common School forecast. Growth will continue at 2 percent in 2022-23, outpacing regular K-12 education growth, due to increases in both programs.

Risks to the Forecast

The risks to the Special Education enrollment forecast are high. Special Education enrollment is subject to the same risks as the Common Schools forecast during this period of uncertainty. Additionally, the number of districts with Special Education enrollment under the index is declining. However, modest enrollment shifts between districts at or under the index could impact the funded Special Education forecast.

Forecast Contact:
 Paula Moore
 360-664-9376
 paula.moore@efc.wa.gov