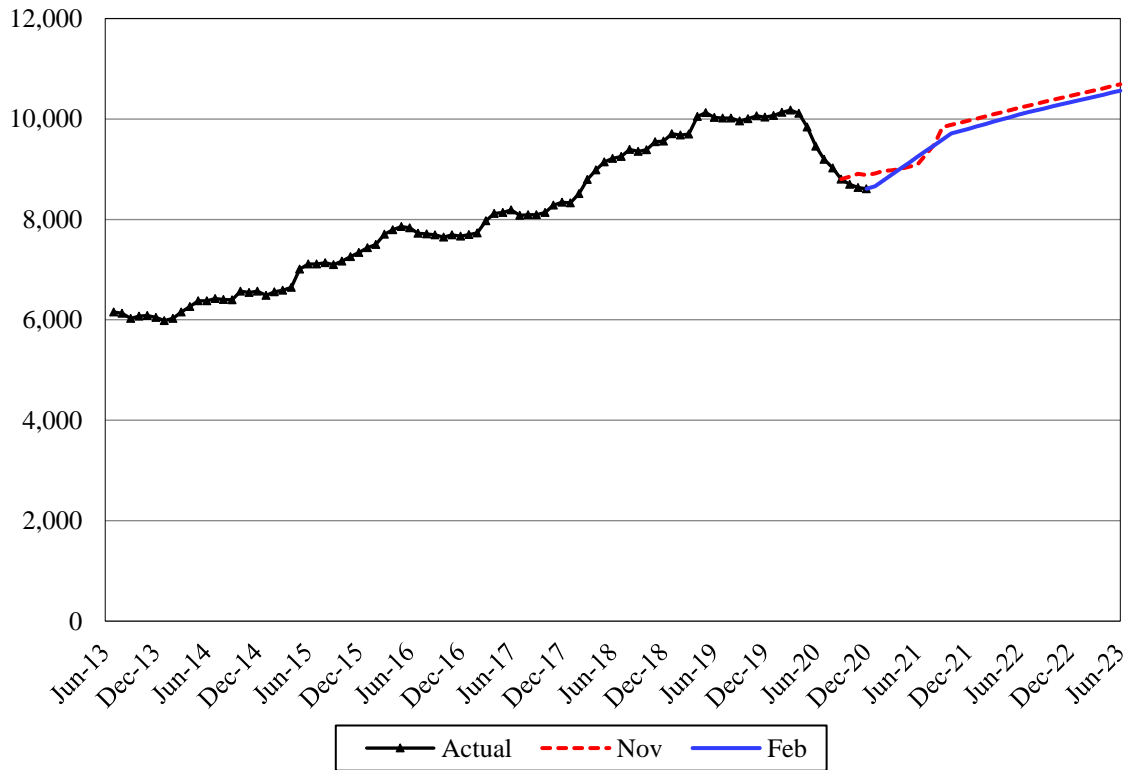


## Early Support for Infants and Toddlers (ESIT) (Unofficial Courtesy Forecast)



The Early Support for Infants and Toddlers program (ESIT) coordinates and provides services for eligible infants and toddlers and is administered by the Department of Children, Youth, and Families (DCYF). The ESIT caseload is defined as the number of children with active Individualized Family Service Plans (IFSPs). Children are evaluated and become eligible if found to have specific developmental delays. As of September 1, 2020, ESIT includes state funded services previously provided through Special Education Birth to Age 2.

### Forecast Comparisons (Fiscal Year Averages)

Fiscal Year	Nov-20 Forecast	Feb-21 Forecast	Nov to Feb Difference	Percent Difference
2021	8,972	8,890	-82	-0.9%
2022	9,922	9,792	-130	-1.3%
2023	10,476	10,348	-128	-1.2%

Compared to the November forecast, the February forecast is 0.9 percent lower for FY 2021, and, on average, 1.3 percent lower for the 2021-23 Biennium.

### Tracking the Current Forecast

	Nov-20 Forecast	Actual	Variance	Percent Variance
Oct-20	8,853	8,699	-154	-1.7%
Nov-20	8,907	8,632	-275	-3.1%
Dec-20	8,881	8,610	-271	-3.1%

ESIT has tracked an average of 2.6 percent below the November forecast. COVID-19 has reduced both program referrals and active participants.

### Academic Year Caseload Change

	Fiscal Year	Caseload	Change from Prior Year	Percent Change
Actual	2014	6,143		
	2015	6,609	466	7.6%
	2016	7,436	827	12.5%
	2017	7,832	396	5.3%
	2018	8,500	668	8.5%
	2019	9,649	1,149	13.5%
	2020	9,991	342	3.5%
<i>Forecast</i>	2021	8,890	-1,101	-11.0%
	2022	9,792	902	10.1%
	2023	10,348	556	5.7%

HB 2787 from the 2020 legislative session transferred, effective September 1, 2020, the state-funded Birth to Age 2 Special Education program from OSPI to the ESIT program at DCYF.

For FY 2021, the ESIT caseload is projected to decline by 11.0 percent due to COVID-19 concerns. The program has seen reductions in entries and active participants. Referrals from pediatricians and pediatric services providers declined sharply in March through May, and partially recovered in June and July. The reduced rate of referrals is expected through mid-CY 2021. In FY 2022 and 2023, the ESIT caseload is projected to grow, but at a lower rate than the historical average. This is because during recessions, the overall age 0 to 2 population declines due to drops in birth rates and families moving into Washington State.

#### *Risks to the Forecast*

Risks to the February 2021 forecast are higher than normal due to uncertainty from implementing a policy change, COVID-19 prevalence, and the economy. Historically, changing birth rates and policy changes have most impacted this forecast.