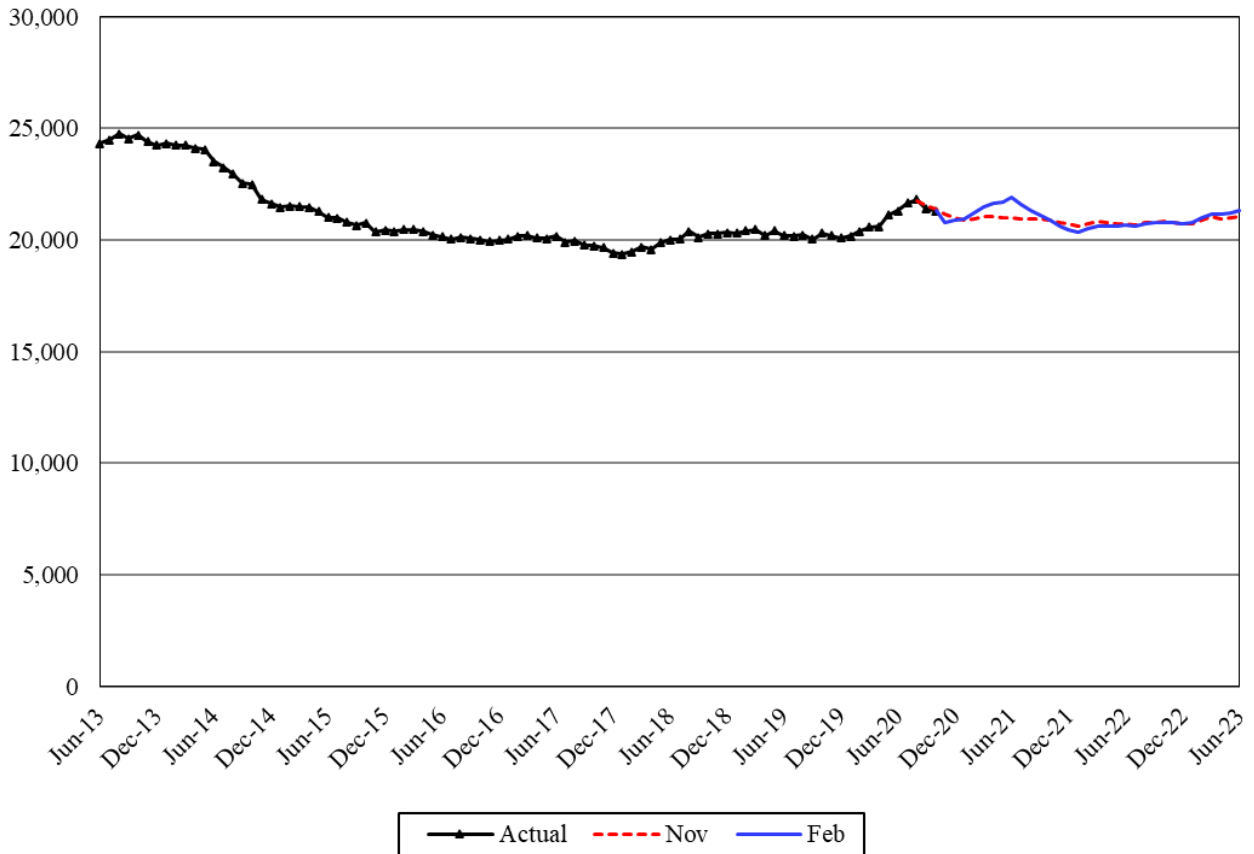


Aged, Blind and Disabled Assistance Grant Program – Total Caseload



The Aged, Blind and Disabled Assistance program (ABD) provides financial assistance to persons whose long-term mental and/or physical disabilities likely qualify them for the federal Supplemental Security Income (SSI) program, regardless of citizenship status. This forecast includes three components: Presumptive SSI, Aged, and Disabled.

Forecast Comparisons (Fiscal Year Averages)

Fiscal Year	Nov-20 Forecast	Feb-21 Forecast	Nov to Feb Difference	Percent Difference
2021	21,205	21,401	197	0.9%
2022	20,803	20,781	-22	-0.1%
2023	20,859	20,921	62	0.3%

The February 2021 forecast is 197 cases or 0.9 percent higher than the November 2020 forecast for FY 2021 and, on average, 20 cases or 0.1 percent higher for the 2021-23 Biennium.

Tracking the Current Forecast

	Nov-20 Forecast	Actual	Variance	Percent Variance
Aug-20	21,748	21,825	77	0.4%
Sep-20	21,549	21,389	-159	-0.7%
Oct-20	21,401	21,316	-86	-0.4%

Actuals have been tracking, on average, 56 cases or 0.3 percent below the November 2020 forecast for the past three months.

The February 2021 forecast change is mainly due to the development of COVID-19 and related policy changes. Many policy changes were related to the processing of eligibility review and mid-certification review cases. This forecast keeps the November 2020 forecast assumption of setting July 2021 as the ‘back to normal’ month.

Fiscal Year Caseload Change

	Fiscal Year	Caseload	Change from Prior Year	Percent Change
Actual	2014	24,309		
	2015	21,914	-2,395	-9.9%
	2016	20,512	-1,402	-6.4%
	2017	20,075	-437	-2.1%
	2018	19,707	-368	-1.8%
	2019	20,293	586	3.0%
	2020	20,441	148	0.7%
<i>Forecast</i>	2021	21,401	960	4.7%
	2022	20,781	-620	-2.9%
	2023	20,921	140	0.7%

The ABD growth rate exhibits large volatility. This is mainly due to:

1. HB 2667 that provides for a client to receive both the ABD program and the Essential Needs and Housing Support program (HEN) assistance concurrently while an application for federal SSI benefits is pending.
2. HB1831 that increases resources exempted when determining eligibility for public assistance.
3. COVID-19 and related policy changes.

Risks to the Forecast

The risks to the forecast are high. The risks are mainly due to the uncertainties of the COVID-19 impact and corresponding policies.