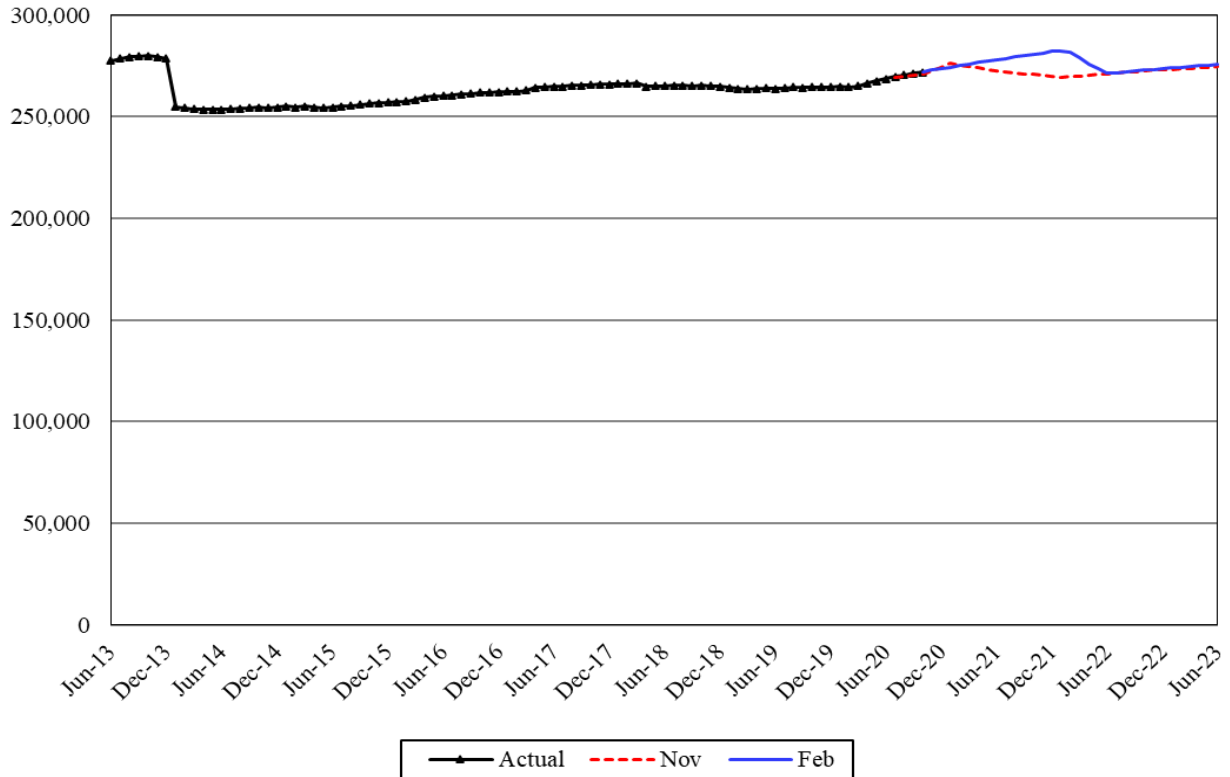


Medical Assistance Aged, Disabled and Other Medical

Caseload Forecast Council
February 12, 2021

Aged, Disabled and Other Medical



The forecast for Aged, Disabled and Other Medical is composed of nine component forecasts: Categorically Needy (CN) Aged, CN Disabled, Medically Needy (MN) Aged, MN Disabled, Breast and Cervical Cancer Treatment (BCCT), Healthcare for Workers with Disabilities (HWD), Qualified Medicare Beneficiaries (QMB), MCS Alien Medical, and Alien Emergency Medical (AEM).

Forecast Comparisons (Fiscal Year Averages)

Fiscal Year	Nov-20 Forecast	Feb-21 Forecast	Nov to Feb Difference	Percent Difference
2021	272,736	273,966	1,231	0.5%
2022	270,615	278,835	8,220	3.0%
2023	273,177	273,752	575	0.2%

The February 2021 forecast is 1,231 cases or 0.5 percent higher than the November 2020 forecast for FY 2021 and, on average, 4,397 cases or 1.6 percent higher for the 2021-23 Biennium.

Forecast Contact:
Shidong Zhang
360-664-9370
Shidong.zhang@cfc.wa.gov

Tracking the Current Forecast

	Nov-20 Forecast	Actual	Variance	Percent Variance
Jul-20	269,118	269,804	686	0.3%
Aug-20	269,655	270,518	863	0.3%
Sep-20	270,218	271,263	1,045	0.4%
Oct-20	270,860	271,996	1,135	0.4%

Actuals have been tracking, on average, 932 cases or 0.3 percent above the November 2020 forecast for the past four months.

The February forecast change is mainly due to the development of the COVID-19 impact and related policy changes at both the federal and state levels. The decisive change of the February forecast from the November 2020 forecast is that the federal government notified its intention to extend the Public Health Emergency (PHE) period to the end of CY 2021. In the PHE period, the Health Care Authority (HCA) cannot terminate a client's eligibility except for a few exemptions according to the Families First Coronavirus Response Act (FFCRA). However, new qualified clients continue to enroll in the HCA programs, resulting in a continuous increase of this caseload until the end of the PHE, and a large drop in the caseload after the PHE when HCA starts to process the postponed cases.

Fiscal Year Caseload Change

	Fiscal Year	Caseload	Change from Prior Year	Percent Change
<i>Actual</i>	2014	266,631		
	2015	254,527	-12,104	-4.5%
	2016	257,526	2,999	1.2%
	2017	262,552	5,026	2.0%
	2018	265,601	3,049	1.2%
	2019	264,590	-1,011	-0.4%
	2020	265,401	812	0.3%
<i>Forecast</i>	2021	273,966	8,565	3.2%
	2022	278,835	4,868	1.8%
	2023	273,752	-5,083	-1.8%

The caseload growth has been relatively stable in recent years except for a negative growth in FY 2019 due to an eligibility system cleanup impacting QMB. In the following years, this caseload will continue to be impacted by COVID-19.

Risks to the Forecast

Risks to this forecast are high because of the uncertainty of the COVID-19 impact and corresponding economic impacts and policy impacts.

Forecast Contact:
 Shidong Zhang
 360-664-9370
 Shidong.zhang@cfc.wa.gov