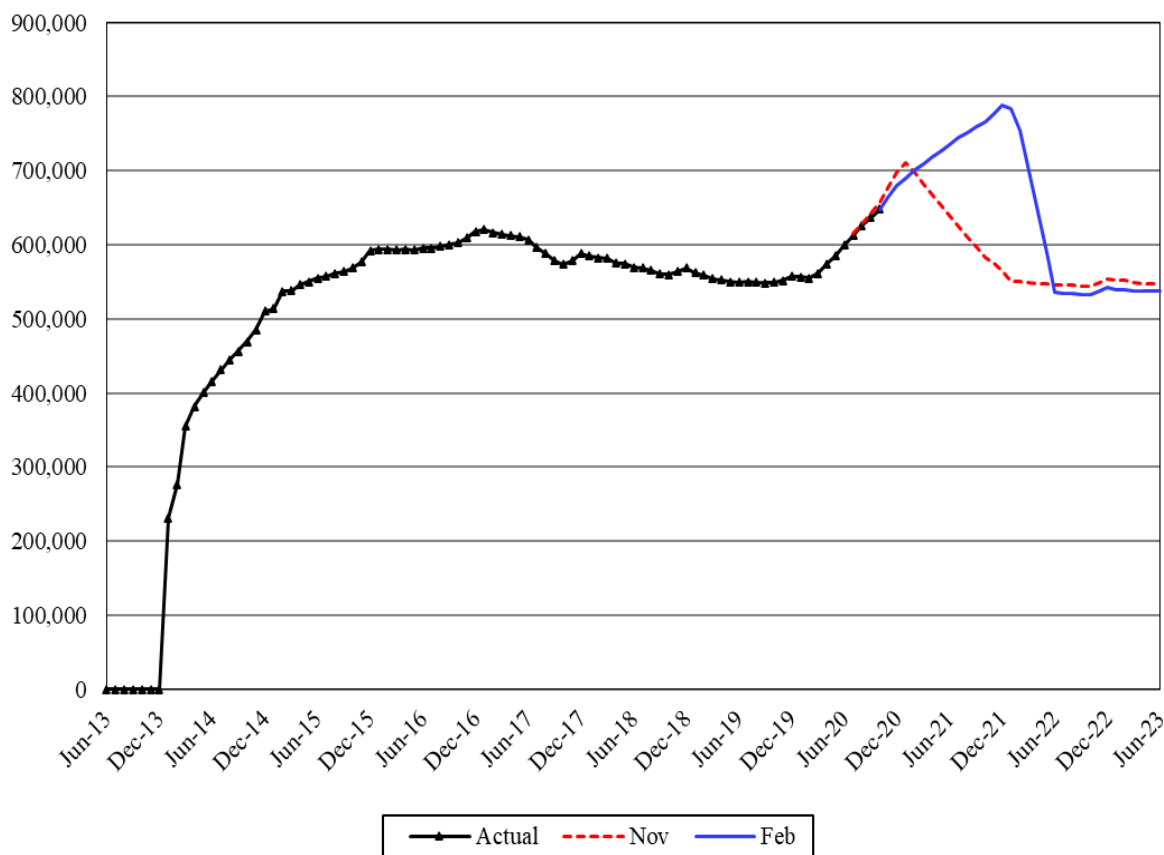


# Medical Assistance Low Income Adults

Caseload Forecast Council  
February 12, 2021

## Low Income Adults



The Low Income Adults caseload forecast began in January 2014 with the implementation of the Affordable Care Act (ACA), and reflects the extension of Medicaid eligibility to all adults under 138 percent of the federal poverty level (FPL).

### Forecast Comparisons (Fiscal Year Averages)

Fiscal Year	Nov-20 Forecast	Feb-21 Forecast	Nov to Feb Difference	Percent Difference
2021	664,154	679,281	15,128	2.3%
2022	570,864	716,215	145,351	25.5%
2023	548,209	537,199	-11,010	-2.0%

The February 2021 forecast is 15,128 cases or 2.3 percent higher than the November 2020 forecast for FY 2021 and, on average, 67,170 cases or 12.0 percent higher for the 2021-23 Biennium.

Forecast Contact:  
Shidong Zhang  
360-664-9370  
Shidong.zhang@cfc.wa.gov

### Tracking the Current Forecast

	Nov-20 Forecast	Actual	Variance	Percent Variance
Jul-20	615,648	612,677	-2,971	-0.5%
Aug-20	629,089	626,681	-2,408	-0.4%
Sep-20	642,961	637,180	-5,781	-0.9%
Oct-20	656,852	648,022	-8,830	-1.3%

Actuals have been tracking, on average, 4,997 cases or 0.8 percent below the November 2020 forecast for the past four months.

The February forecast change is mainly due to the development of the COVID-19 impact and related policy changes at both the federal and state levels. The decisive change of the February forecast from the November 2020 forecast is that the federal government notified its intention to extend the Public Health Emergency (PHE) period to the end of CY 2021. In the PHE period, the Health Care Authority (HCA) cannot terminate a client's eligibility except for a few exemptions according to the Families First Coronavirus Response Act (FFCRA). However, new qualified clients continue to enroll in HCA programs, resulting in a continuous increase in this caseload until the end of the PHE, and a large drop in the caseload after the PHE when HCA starts to process the postponed cases.

### Fiscal Year Caseload Change

	Fiscal Year	Caseload	Change from Prior Year	Percent Change
<i>Actual</i>	2014	171,845		
	2015	503,339	331,494	192.9%
	2016	582,136	78,797	15.7%
	2017	608,856	26,720	4.6%
	2018	581,126	-27,730	-4.6%
	2019	559,722	-21,404	-3.7%
	2020	561,689	1,967	0.4%
<i>Forecast</i>	2021	679,281	117,592	20.9%
	2022	716,215	36,934	5.4%
	2023	537,199	-179,016	-25.0%

Caseload growth is not stable recently mainly due to improvements in the post eligibility review process and residency checks. In the following years, this caseload will continue to be impacted by COVID-19.

#### *Risks to the Forecast*

Risks to this forecast are high because of the uncertainty of the COVID-19 impact and corresponding economic impacts and policy impacts.

*Forecast Contact:*  
Shidong Zhang  
360-664-9370  
Shidong.zhang@cfc.wa.gov