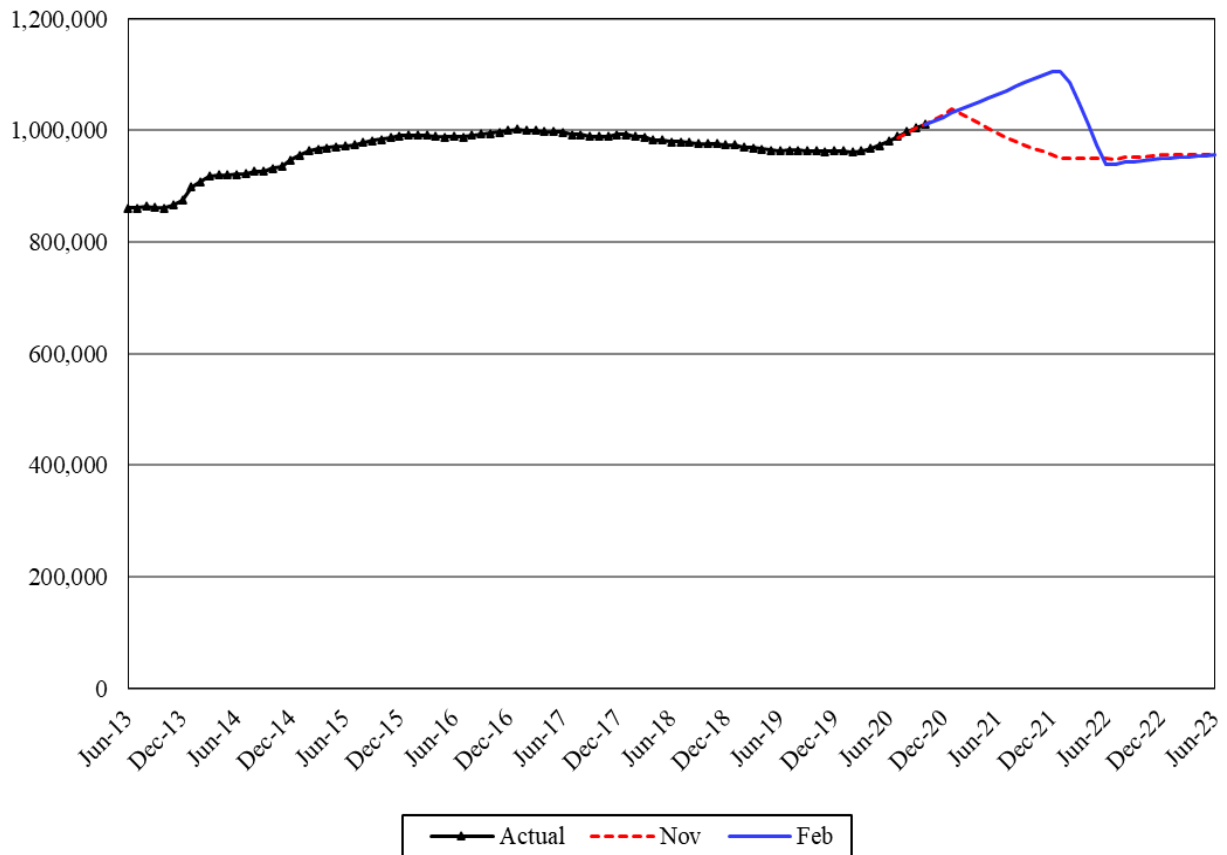


Medical Assistance

Adult Caretakers and Children

Caseload Forecast Council
February 12, 2021

Medical Assistance for Adult Caretakers and Children



The Medical Assistance for Adult Caretakers and Children category is composed of seven caseloads for parents/caretakers, pregnant clients, and children by citizenship and income level.

Forecast Comparisons (Fiscal Year Averages)

Fiscal Year	Nov-20 Forecast	Feb-21 Forecast	Nov to Feb Difference	Percent Difference
2021	1,011,657	1,027,683	16,026	1.6%
2022	960,451	1,058,343	97,892	10.2%
2023	954,494	949,250	-5,244	-0.5%

The February 2021 forecast is 16,026 cases or 1.6 percent higher than the November 2020 forecast for FY 2021 and, on average, 46,324 cases or 4.8 percent higher for the 2021-23 Biennium.

Forecast Contact:
Shidong Zhang
360-664-9370
Shidong.zhang@cfc.wa.gov

Tracking the Current Forecast

	Nov-20 Forecast	Actual	Variance	Percent Variance
Jul-20	986,071	989,300	3,229	0.3%
Aug-20	995,013	998,203	3,191	0.3%
Sep-20	1,002,936	1,004,446	1,511	0.2%
Oct-20	1,010,472	1,010,899	428	0.0%

Actuals have been tracking, on average, 2,090 cases or 0.2 percent above the November 2020 forecast for the past four months.

The February forecast change is mainly due to the development of the COVID-19 impact and related policy changes at both the federal and state levels. The decisive change of the February forecast from the November 2020 forecast is that the federal government notified its intention to extend the Public Health Emergency (PHE) period to the end of CY 2021. In the PHE period, the Health Care Authority (HCA) cannot terminate a client's eligibility except for a few exemptions according to the Families First Coronavirus Response Act (FFCRA). However, new qualified clients continue to enroll in HCA programs, resulting in a continuous increase in this caseload until the end of the PHE, and a large drop in the caseload after the PHE when HCA starts to process the postponed cases.

Fiscal Year Caseload Change

	Fiscal Year	Caseload	Change from Prior Year	Percent Change
<i>Actual</i>	2014	889,967		
	2015	949,176	59,209	6.7%
	2016	986,495	37,319	3.9%
	2017	996,942	10,447	1.1%
	2018	988,498	-8,444	-0.8%
	2019	972,695	-15,803	-1.6%
	2020	966,087	-6,608	-0.7%
<i>Forecast</i>	2021	1,027,683	61,596	6.4%
	2022	1,058,343	30,660	3.0%
	2023	949,250	-109,092	-10.3%

Caseload growth is not stable recently that mainly due to improvements in the post eligibility review process and residency checks. In the following years, this caseload will continue to be impacted by COVID-19.

Risks to the Forecast

Risks to this forecast are high because of the uncertainties of the COVID-19 impact and corresponding economic impacts and policy impacts.