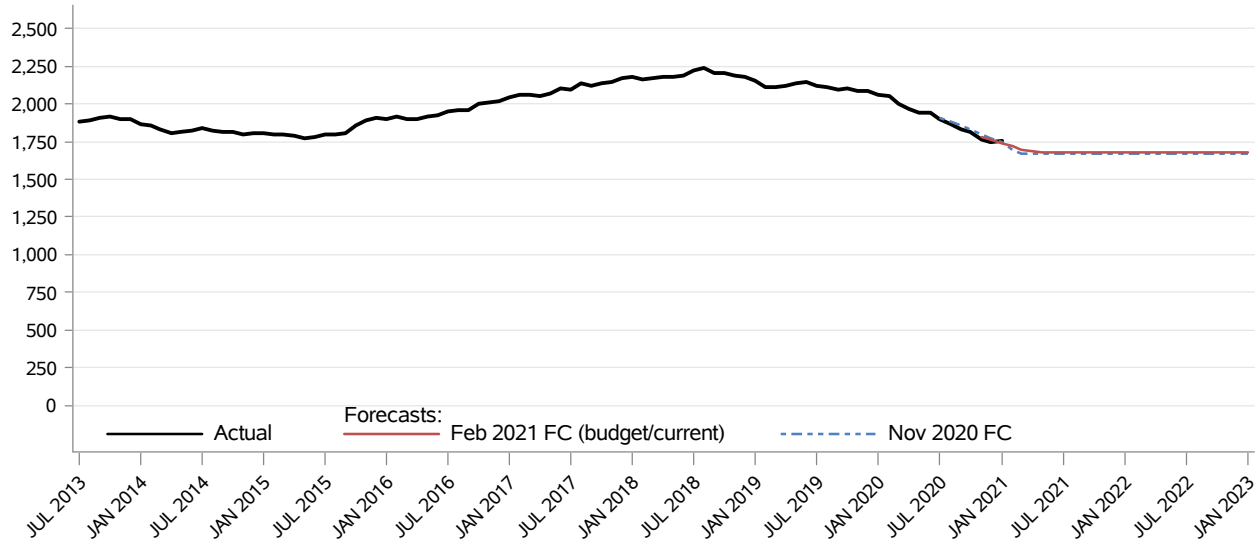


## Medical Services Medical Care Services

CFC Monthly Monitoring Report

The **Medical Care Services** provides provides limited health care coverage to adults who are not eligible for Apple Health programs with CN, ABP, or MN scope of care and meet the eligibility criteria for either the Aged, Blind or Disabled–cash or the Housing Essential Needs (HEN) program.



Month	Actual	Forecasts		Budget/Current Forecast and Variance		
		Nov 2020	Feb 2021	Feb 2021	N	%
AUG 2020	1,868	1,882				
SEP 2020	1,833	1,855				
OCT 2020	1,814	1,828				
NOV 2020	1,766	1,802	1,783	1,783	-17	( 1.0%)
DEC 2020	1,750	1,776	1,763	1,763	-13	( 0.7%)
JAN 2021	1,752	1,750	1,741	1,741	11	0.6%
FEB 2021		1,698	1,720	1,720		
MAR 2021		1,672	1,698	1,698		
APR 2021		1,672	1,684	1,684		
MAY 2021		1,672	1,677	1,677		
JUN 2021		1,672	1,677	1,677		
JUL 2021		1,672	1,677	1,677		

Data Source: HCA Provider One (last update: 04/05/2021)

**Medical Services**  
**Medical Care Services**  
CFC Monthly Monitoring Report

Descriptions:

- **Actual:** The number of clients eligible at any time during the month and are lag adjusted up to 24 months and the most recent two months of data are not shown.
- **Budget Forecast:** Caseload forecast adopted by the Caseload Forecast Council to serve as the basis for the biennial or supplemental budget. The actual budget may incorporate adjustments to this forecast to reflect legislation and policy decisions by the legislature subsequent to the development of the forecast.
- **Current Forecast:** Most recent forecast adopted by the Caseload Forecast Council; may be the same as the Budget Forecast.

**Disclaimer of Liability:**

Although the Washington State Caseload Forecast Council does all that it can to assure the accuracy of its forecasts and the data on which its forecasts are based, no warranty expressed or implied is made regarding accuracy, adequacy, completeness, legality, reliability, or usefulness of any information contained herein. This disclaimer applies to both isolated and aggregate uses of the information. If you find any errors or omissions, we encourage you to report them to the Caseload Forecast Council.