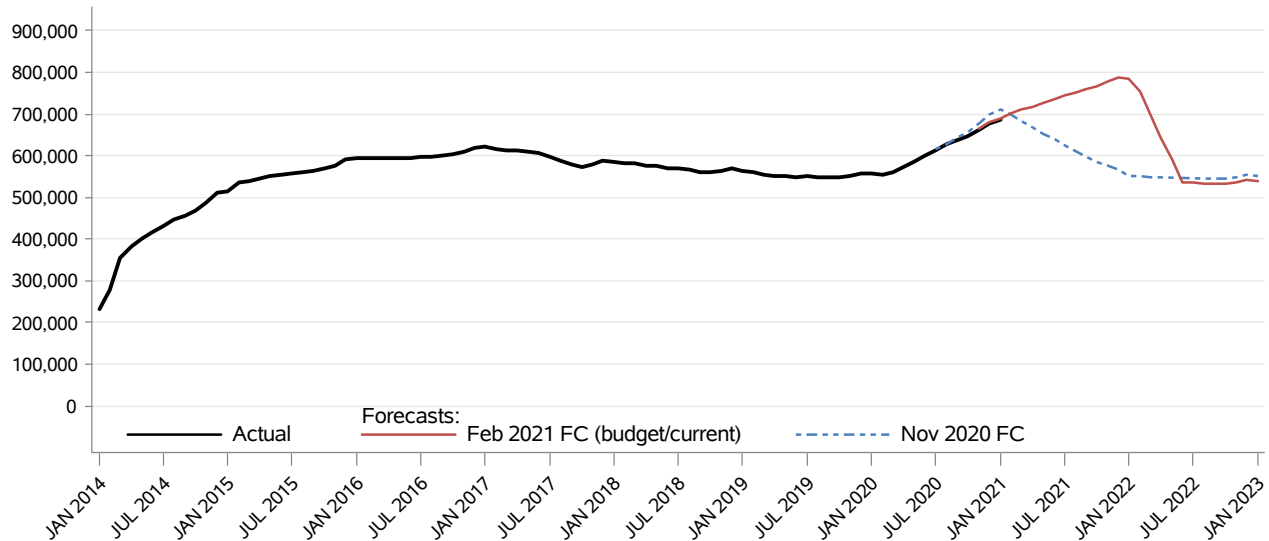


## Medical Services Total Low Income Adults CFC Monthly Monitoring Report

The **Total Low Income Adults** medical forecast consists primarily of persons who are newly eligible for medical coverage under the Affordable Care Act (ACA). It also includes clients from the following existing caseloads who were transferred to this category January 1, 2014: the Medical Care Services, Presumptive SSI, non-dual eligible MN Disabled, Breast and Cervical Cancer under 138 percent of the FPL, Refugee, and Basic Health Plan clients.



Month	Actual	Forecasts		Budget/Current Forecast and Variance		
		Nov 2020	Feb 2021	Feb 2021	N	%
AUG 2020	626,523	629,089				
SEP 2020	636,992	642,961				
OCT 2020	647,800	656,852				
NOV 2020	662,035	676,782	663,725	663,725	-1,690	( 0.3%)
DEC 2020	678,478	697,551	680,860	680,860	-2,382	( 0.3%)
JAN 2021	687,132	711,330	690,283	690,283	-3,151	( 0.5%)
FEB 2021		697,687	700,965	700,965		
MAR 2021		682,302	709,571	709,571		
APR 2021		667,273	718,209	718,209		
MAY 2021		653,197	727,287	727,287		
JUN 2021		639,174	735,917	735,917		
JUL 2021		625,200	744,110	744,110		

Data Source: HCA Provider One (last update: 04/05/2021)

**Medical Services**  
**Total Low Income Adults**  
CFC Monthly Monitoring Report

Descriptions:

- **Actual:** The number of clients eligible at any time during the month and are lag adjusted up to 24 months and the most recent two months of data are not shown.
- **Budget Forecast:** Caseload forecast adopted by the Caseload Forecast Council to serve as the basis for the biennial or supplemental budget. The actual budget may incorporate adjustments to this forecast to reflect legislation and policy decisions by the legislature subsequent to the development of the forecast.
- **Current Forecast:** Most recent forecast adopted by the Caseload Forecast Council; may be the same as the Budget Forecast.

**Special Notes:**

The MS Low Income Adults caseload began with implementation of the Affordable Care Act, January 1, 2014

**Disclaimer of Liability:**

Although the Washington State Caseload Forecast Council does all that it can to assure the accuracy of its forecasts and the data on which its forecasts are based, no warranty expressed or implied is made regarding accuracy, adequacy, completeness, legality, reliability, or usefulness of any information contained herein. This disclaimer applies to both isolated and aggregate uses of the information. If you find any errors or omissions, we encourage you to report them to the Caseload Forecast Council.