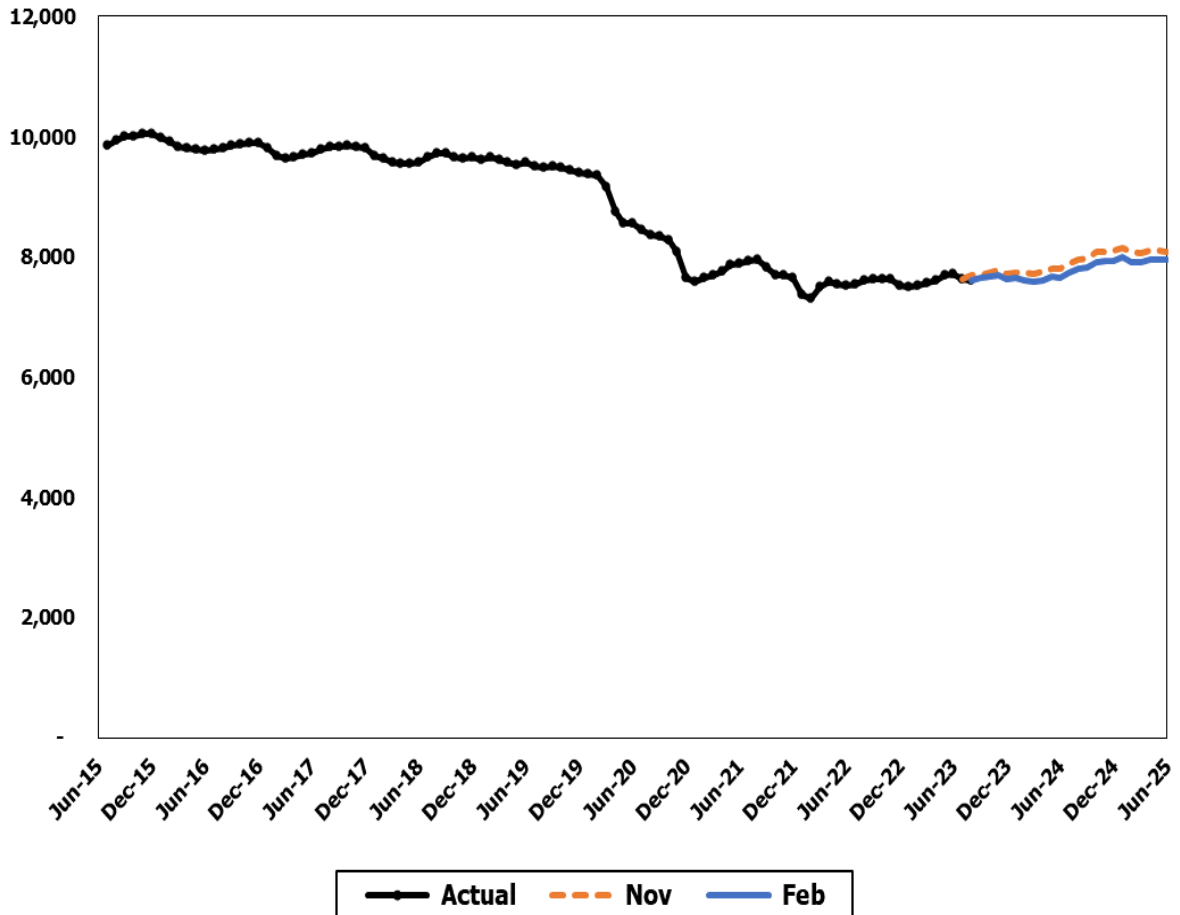


**Nursing Homes**



The Nursing Homes forecast consists of Medicaid eligible clients who receive care in state licensed nursing facilities. Nursing facilities provide care to eligible clients who require short post-hospital recuperative care, are no longer capable of independent living, and require nursing services, or are patients with chronic disabilities needing long-term rehabilitation and/or medical services.

**Forecast Comparisons (Fiscal Year Averages)**

Fiscal Year	Nov-23 Forecast	Feb-24 Forecast	Nov to Feb Difference	Percent Difference
2024	7,733	7,640	-93	-1.2%
2025	8,056	7,904	-152	-1.9%

The February 2024 forecast is, on average, 123 cases or 1.6 percent lower than the November 2023 forecast for the 2023-25 Biennium.

*Forecast Contact:  
Shidong Zhang  
360-664-9370  
shidong.zhang@cfc.wa.gov*

### Tracking the Current Forecast

Month	Nov-23		Variance	Percent
	Forecast	Actual		Variance
Jul-23	7,631	7,632	1	0.0%
Aug-23	7,697	7,599	-97	-1.3%

Actuals are tracking, on average, 48 cases or 0.6 percent below the November forecast.

Consistent with other long term care programs, the Nursing Homes caseload experienced enrollment increases in the past months. The enrollment increase is likely due to improved post-pandemic confidence in long term care services and an increase in recruitment. On the other hand, more clients left the nursing home program, lowering the February forecast. In addition, a few nursing home facilities changed ownership and could not timely report caseload data.

### Fiscal Year Caseload Change

	Fiscal Year	Caseload	Change from Prior Year	Percent Change
Actual	2016	9,915		
	2017	9,775	-140	-1.4%
	2018	9,706	-69	-0.7%
	2019	9,635	-71	-0.7%
	2020	9,214	-421	-4.4%
	2021	7,969	-1,245	-13.5%
	2022	7,629	-339	-4.3%
	2023	7,596	-34	-0.4%
Forecast	2024	7,640	44	0.6%
	2025	7,904	264	3.5%

#### *Risks to the Forecast*

The risks to the nursing homes forecast are moderate to high. There are many layers of uncertainty about when the caseload will begin to rebound, how long a rebound will take, and what level the caseload will reach when it eventually stabilizes.