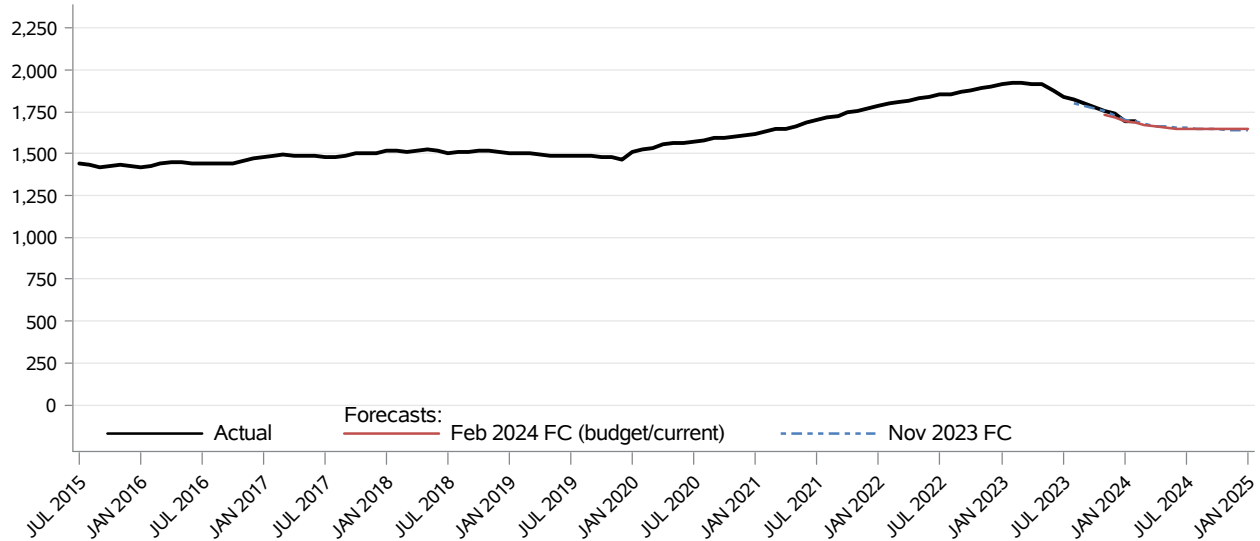


# Medical Services Healthcare for Workers with Disabilities (HWD) CFC Monthly Monitoring Report

The **Healthcare for Workers with Disabilities (HWD)** program, based on the federal Ticket to Work Incentives Improvement Act, expands Medicaid coverage to employed individuals with disabilities.



Month	Actual	Forecasts		Budget/Current Forecast and Variance		
		Nov 2023	Feb 2024	Feb 2024	N	%
SEP 2023	1,800	1,788				
OCT 2023	1,778	1,772				
NOV 2023	1,756	1,753	1,735	1,735	21	1.2%
DEC 2023	1,743	1,730	1,717	1,717	26	1.5%
JAN 2024	1,694	1,706	1,698	1,698	-4	( 0.3%)
FEB 2024	1,691	1,691	1,685	1,685	6	0.4%
MAR 2024		1,678	1,673	1,673		
APR 2024		1,665	1,662	1,662		
MAY 2024		1,661	1,654	1,654		
JUN 2024		1,657	1,651	1,651		
JUL 2024		1,654	1,649	1,649		
AUG 2024		1,651	1,648	1,648		

Data Source: HCA Provider One (last update: 05/06/2024)

**Medical Services**  
**Healthcare for Workers with Disabilities (HWD)**  
CFC Monthly Monitoring Report

Descriptions:

- **Actual:** The number of clients eligible at any time during the month and are lag adjusted up to 24 months and the most recent two months of data are not shown.
- **Budget Forecast:** Caseload forecast adopted by the Caseload Forecast Council to serve as the basis for the biennial or supplemental budget. The actual budget may incorporate adjustments to this forecast to reflect legislation and policy decisions by the legislature subsequent to the development of the forecast.
- **Current Forecast:** Most recent forecast adopted by the Caseload Forecast Council; may be the same as the Budget Forecast.

**Disclaimer of Liability:**

Although the Washington State Caseload Forecast Council does all that it can to assure the accuracy of its forecasts and the data on which its forecasts are based, no warranty expressed or implied is made regarding accuracy, adequacy, completeness, legality, reliability, or usefulness of any information contained herein. This disclaimer applies to both isolated and aggregate uses of the information. If you find any errors or omissions, we encourage you to report them to the Caseload Forecast Council.