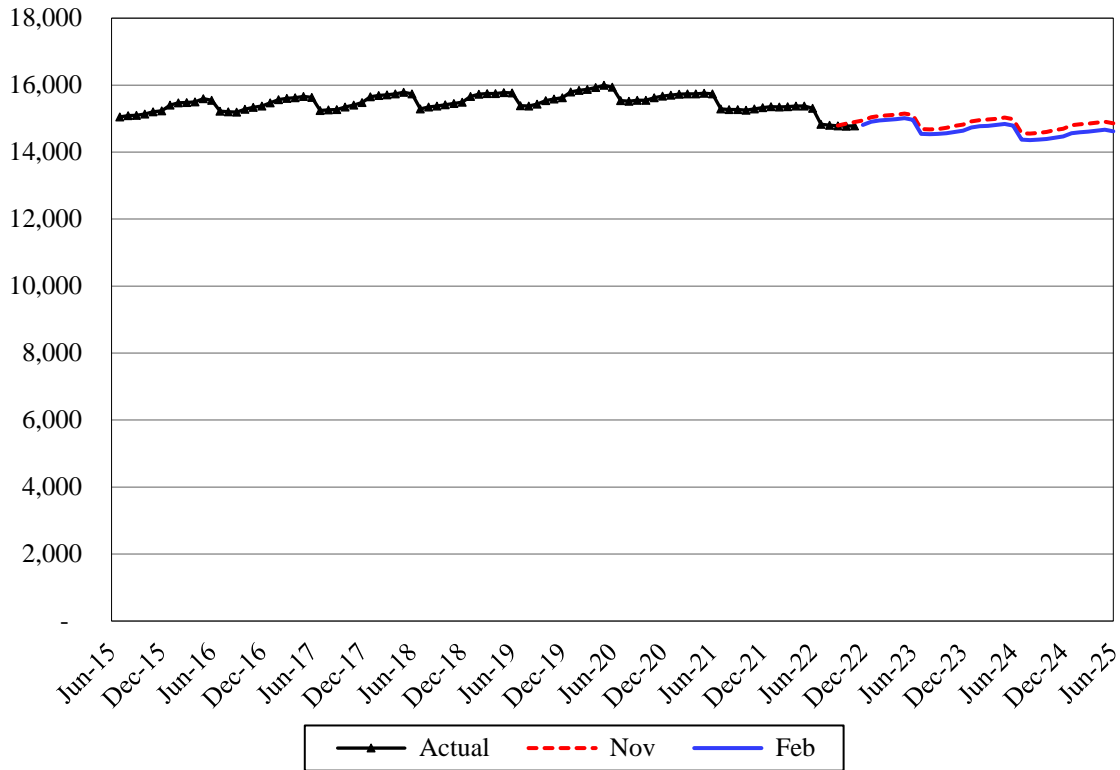


Children's Services

Adoption Support

Caseload Forecast Council
February 10, 2023

Adoption Support – Maintenance Payments



The Adoption Support Maintenance Payment (ASMP) caseload forecast includes eligible adoptive families receiving monthly adoption support maintenance payments.

Forecast Comparisons (Fiscal Year Averages)

| Fiscal Year | Nov-22 Forecast | Feb-23 Forecast | Nov to Feb Difference | Percent Difference |
|-------------|-----------------|-----------------|-----------------------|--------------------|
| 2023 | 14,977 | 14,902 | -75 | -0.5% |
| 2024 | 14,854 | 14,681 | -173 | -1.2% |
| 2025 | 14,733 | 14,508 | -225 | -1.5% |

The February 2023 forecast is 75 cases or 0.5 percent lower than the November 2022 forecast for FY 2023 and, on average, 199 cases or 1.3 percent lower for the 2023-25 Biennium.

Forecast Contact:
Erik Sund
360-664-9374
erik.sund@cfc.wa.gov

Tracking the Current Forecast

| | Nov-22 Forecast | Actual | Variance | Percent Variance |
|--------|--------------------|--------|----------|---------------------|
| Sep-22 | 14,798 | 14,788 | -10 | -0.1% |
| Oct-22 | 14,847 | 14,778 | -69 | -0.5% |
| Nov-22 | 14,902 | 14,784 | -118 | -0.8% |

Actuals are tracking, on average, 66 cases or 0.4 percent below the November forecast. While the COVID-19 pandemic had a smaller initial impact on the ASMP caseload than on some other services for children, average case counts have declined gradually since FY 2020. Reductions in the Licensed Foster Care (LFC) caseload may be having a downstream impact on adoptions.

Fiscal Year Caseload Change

| | Fiscal Year | Caseload | Change from Prior Year | Percent Change |
|-----------------|-------------|----------|---------------------------|-------------------|
| <i>Actual</i> | 2016 | 15,317 | | |
| | 2017 | 15,432 | 115 | 0.8% |
| | 2018 | 15,530 | 98 | 0.6% |
| | 2019 | 15,566 | 36 | 0.2% |
| | 2020 | 15,693 | 127 | 0.8% |
| | 2021 | 15,655 | -39 | -0.2% |
| | 2022 | 15,318 | -337 | -2.2% |
| <i>Forecast</i> | 2023 | 14,902 | -415 | -2.7% |
| | 2024 | 14,681 | -222 | -1.5% |
| | 2025 | 14,508 | -173 | -1.2% |

Risks to the Forecast

ASMP has historically had a stable caseload. Risks to this forecast remain relatively low but are elevated compared to prior years due to uncertainty surrounding the downward trend in foster care cases.