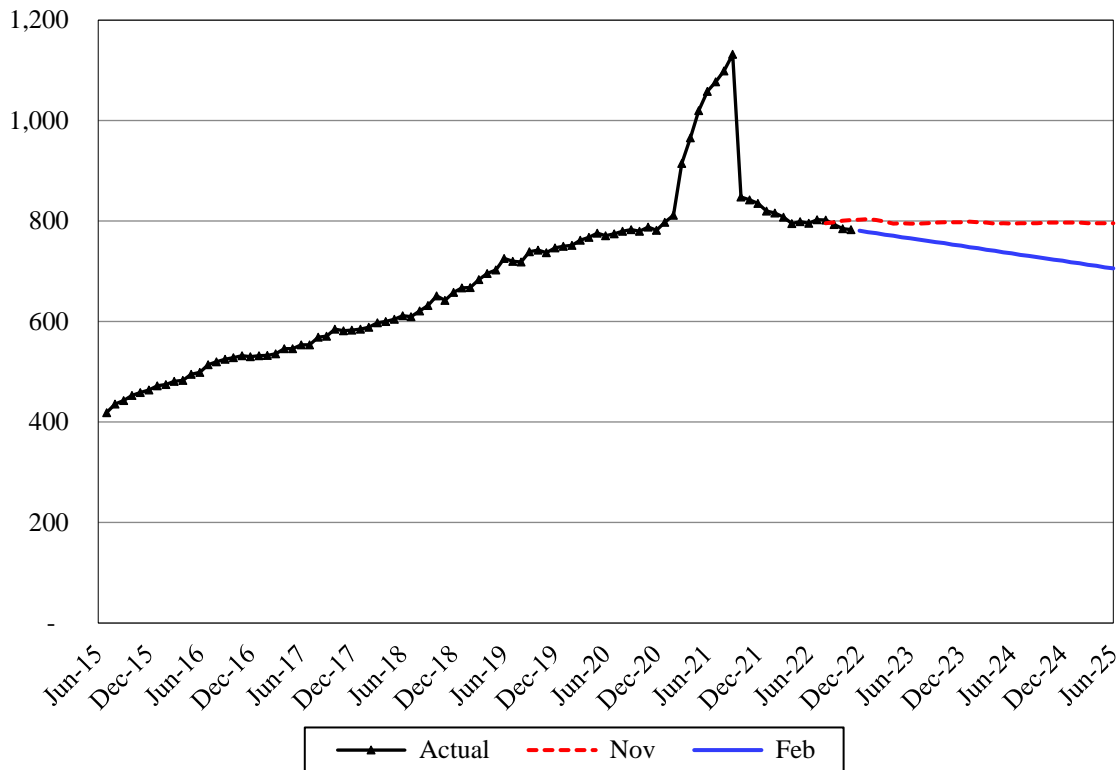


Extended Foster Care



The Extended Foster Care (EFC) caseload is the count of youth receiving certain foster care benefits after turning 18 years old. EFC is intended to promote better outcomes for youth who have aged out of the traditional foster care system.

Forecast Comparisons (Fiscal Year Averages)

Fiscal Year	Nov-22 Forecast	Feb-23 Forecast	Nov to Feb Difference	Percent Difference
2023	799	781	-18	-2.3%
2024	797	750	-47	-5.9%
2025	796	720	-76	-9.5%

The February 2023 forecast is 18 cases or 2.2 percent lower than the November 2022 forecast for FY 2023 and, on average, 62 cases or 7.8 percent lower for the 2023-25 Biennium.

Tracking the Current Forecast

	Nov-22 Forecast	Actual	Variance	Percent Variance
Aug-22	796	802	6	0.8%
Sep-22	798	793	-5	-0.6%
Oct-22	801	785	-16	-2.0%
Nov-22	802	783	-19	-2.4%

Actuals are tracking, on average, 9 cases or 1.1 percent below the November forecast.

This program has experienced many policy changes that expanded eligibility, leading to continued caseload growth until late 2021. Case counts for the period from April 2020 through September 2021 reflect the impact of a temporary policy change that allowed youth who turn 21 while enrolled in EFC to continue receiving EFC support. The decline in the caseload seen since the end of the temporary extension is likely a downstream effect of lower caseloads in Licensed Foster Care (LFC).

Fiscal Year Caseload Change

	Fiscal Year	Caseload	Change from Prior Year	Percent Change
Actual	2016	465		
	2017	533	68	14.6%
	2018	586	53	10.0%
	2019	663	77	13.2%
	2020	749	85	12.9%
	2021	855	106	14.2%
	2022	889	34	4.0%
Forecast	2023	781	-108	-12.1%
	2024	750	-32	-4.0%
	2025	720	-30	-4.0%

Risks to the Forecast

The risks to the EFC forecast are moderate. While the program had a consistent history of growth until late 2021, program participation was directly impacted by a variety of policy changes in past years. The temporary expansion of eligibility effective from April 2020 through September 2021 may have masked an earlier turn in direction for this caseload and it may take some time for the future enrollment trajectory to become clear.