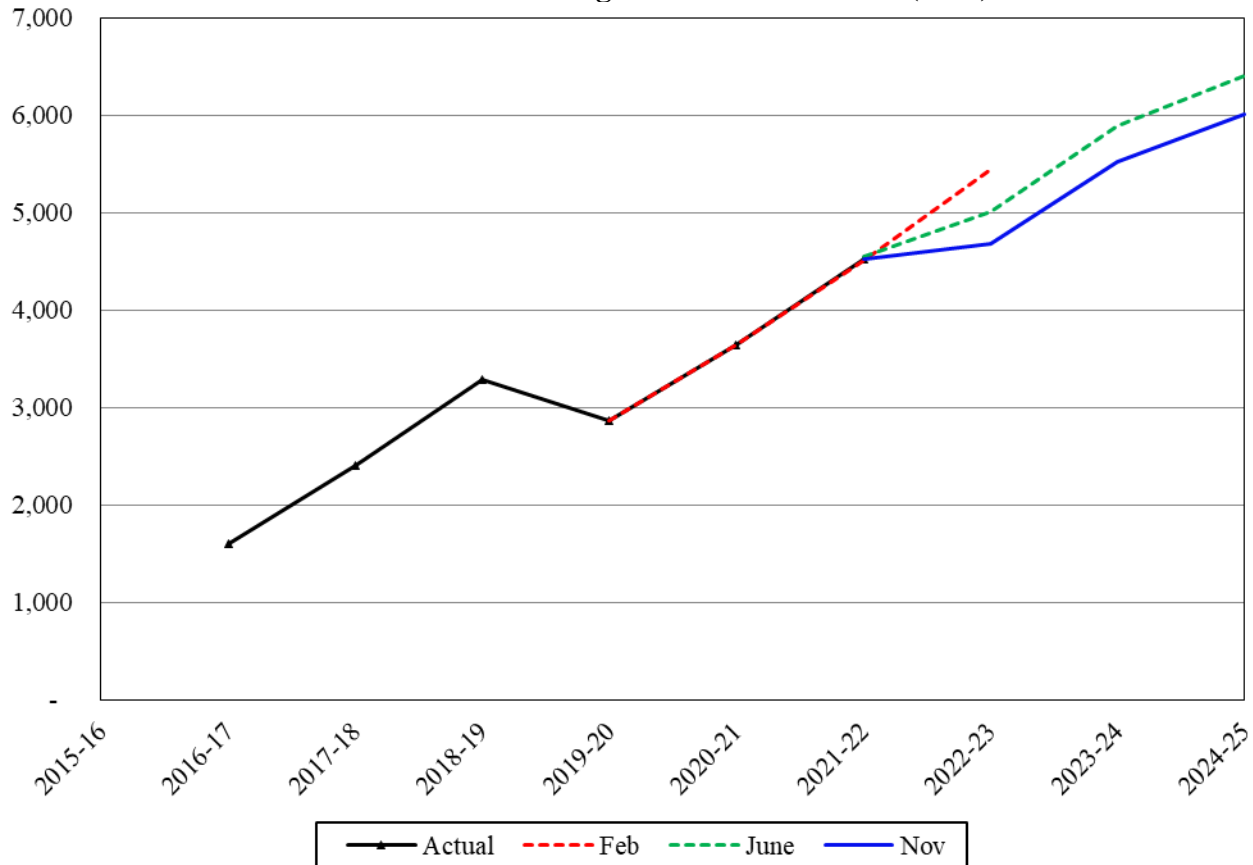


# Charter Schools Enrollment

Caseload Forecast Council  
November 9, 2022

**Charter Schools Average Annual Enrollment (FTE)**



The charter school forecast includes grade-level enrollments, special education, and bilingual education. The CFC’s current charter school forecast dates to the 2016 legislative session, when ESSB 6194 re-established charter schools as an educational system operating separately from the common school system. The Washington State Charter School Commission (WA CSC) and the Spokane School District (SSD) are the only approved authorizers of charter schools.

### Forecast Comparisons (Academic Year Averages)

Academic Year	Feb-22 Forecast	Jun-22 Forecast	Nov-22 Forecast	Feb to Nov Difference	Percent Difference	Jun to Nov Difference	Percent Difference
2021-22	4,515	4,546	4,520	5	0.1%	-26	-0.6%
2022-23	5,445	5,011	4,686	-759	-13.9%	-326	-6.5%
2023-24		5,886	5,522			-364	-6.2%
2024-25		6,399	6,015			-383	-6.0%

Compared to June, the November 2022 forecast is, on average, 374 students or 6.5 percent lower for academic year 2022-23 and 6.1 percent lower for the 2023-25 Biennium.

Forecast Contact:  
Paula Moore  
360-664-9376  
paula.moore@cfc.wa.gov

**Tracking the Current Forecast**

	Jun-22			Percent
	Forecast	Actual	Variance	Variance
Sep-22	5,001	4,759	-242	-4.8%
Oct-22	5,001	4,789	-212	-4.2%

Actuals for the 2022-23 school year are tracking 4.5 percent below the June forecast.

**Academic Year Caseload Change**

	Academic		Change from	Percent
	Year	Caseload	Prior Year	Change
Actual	2013-14			
	2014-15			
	2015-16			
	2016-17	1,603	1,603	
	2017-18	2,408	804	50.2%
	2018-19	3,286	878	36.5%
	2019-20	2,866	-420	-12.8%
	2020-21	3,644	779	27.2%
Forecast	2021-22	4,520	1,654	57.7%
	2022-23	4,686	1,041	28.6%
	2023-24	5,522	1,002	22.2%
	2024-25	6,015	1,330	28.4%

Charter schools are still in an implementation and growth period in Washington State. The enrollment initially grew through 2018-19, then declined in 2019-20 due to the closure of four charter schools. Enrollment then grew an average of 26 percent in 2020-21 and 2021-22 as eight new schools opened during this period.

Overall growth for 2022-23 slowed as enrollment came in lower than forecast, particularly in high schools. Growth will be higher in 2023-24 and 2024-25. Two schools are scheduled to open in 2023-24, with plans to serve 287 students. Additionally, schools that opened in 2020-21 and 2021-22 also plan to continue to add grade levels, increasing their enrollment.

*Risks to the Forecast*

The risks to the charter school forecast are high. New schools vary in their success rates of enrollment and scale-up. Another risk is overly optimistic enrollment and expansion plans from authorized charter schools.