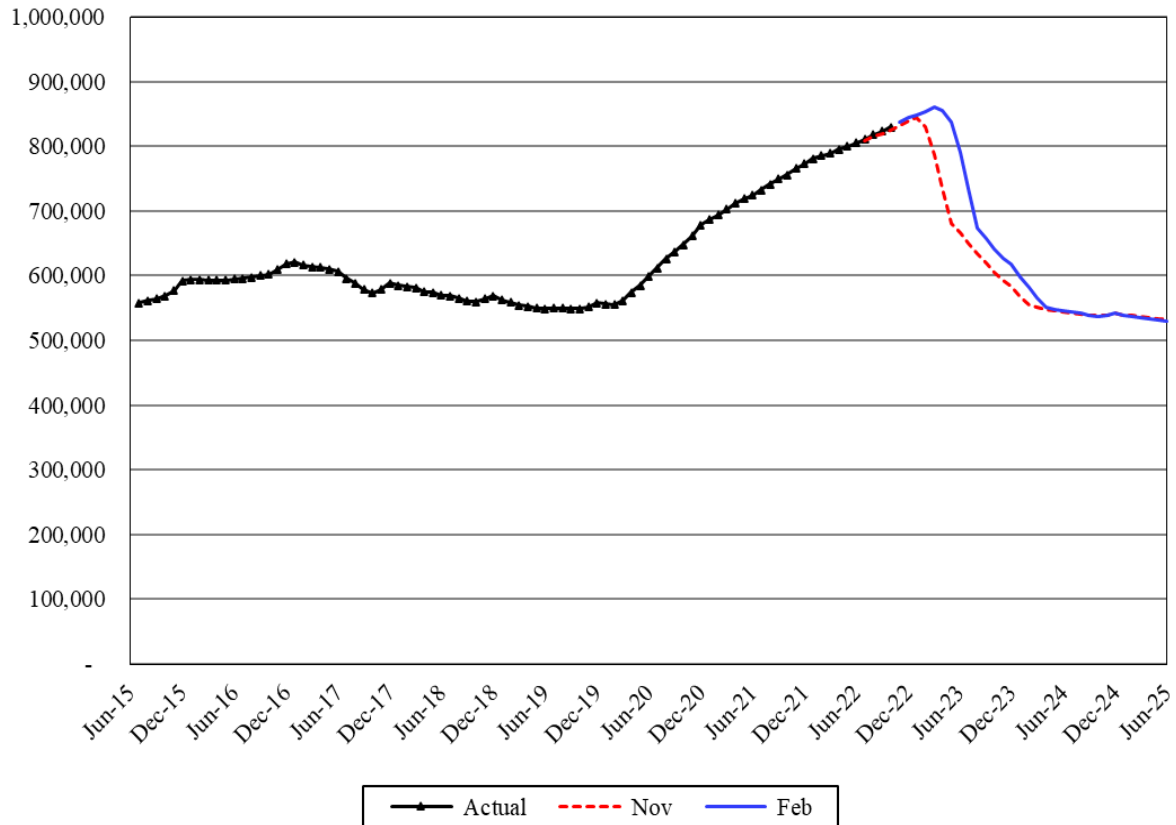


Medical Assistance Low Income Adults

Caseload Forecast Council
February 10, 2023

Low Income Adults



The Low Income Adults caseload forecast began in January 2014 with the implementation of the Affordable Care Act (ACA), and reflects the extension of Medicaid eligibility to adults under 138 percent of the federal poverty level (FPL).

Forecast Comparisons (Fiscal Year Averages)

Fiscal Year	Nov-22 Forecast	Feb-23 Forecast	Nov to Feb Difference	Percent Difference
2023	790,218	834,115	43,897	5.6%
2024	583,081	612,005	28,924	5.0%
2025	538,230	537,194	-1,036	-0.2%

The February 2023 forecast is 43,897 cases or 5.6 percent higher than the November 2022 forecast for FY 2023 and, on average, 13,944 cases or 2.5 percent higher for the 2023-25 Biennium.

Forecast Contact:
Shidong Zhang
360-664-9370
shidong.zhang@cfc.wa.gov

Tracking the Current Forecast

	Nov-22 Forecast	Actual	Variance	Percent Variance
Jul-22	809,121	810,738	1,618	0.2%
Aug-22	816,465	817,986	1,521	0.2%
Sep-22	820,136	823,097	2,961	0.4%
Oct-22	823,956	829,507	5,551	0.7%

Actuals are tracking, on average, 2,913 cases or 0.4 percent above the November forecast.

The federal Consolidated Appropriations Act, 2023 (CAA) decouples the Medicaid continuous enrollment requirement from the Public Health Emergency (PHE) and terminates that requirement on March 31, 2023. The CAA also phases down the enhanced federal Medicaid matching funds through December 2023. Therefore, the Health Care Authority (HCA) will initiate the unwinding process on April 1, 2023, instead of January 1, 2023, as assumed in the November 2022 forecast. As usual during the pandemic period, this federal policy change is the primary reason for the February forecast changes.

During the unwinding period, the caseload will drop when HCA starts to re-determine the postponed cases according to federal requirements. The February forecast also updates the assumptions behind HCA's unwinding process.

Fiscal Year Caseload Change

	Fiscal Year	Caseload	Change from Prior Year	Percent Change
Actual	2016	582,118		
	2017	608,837	26,719	4.6%
	2018	581,125	-27,711	-4.6%
	2019	559,714	-21,411	-3.7%
	2020	561,657	1,943	0.3%
	2021	675,194	113,537	20.2%
	2022	772,853	97,658	14.5%
Forecast	2023	834,115	61,263	7.9%
	2024	612,005	-222,110	-26.6%
	2025	537,195	-74,810	-12.2%

Risks to the Forecast

Risks to this forecast are high primarily because of the uncertainties from the Medicaid continuous enrollment unwinding process.