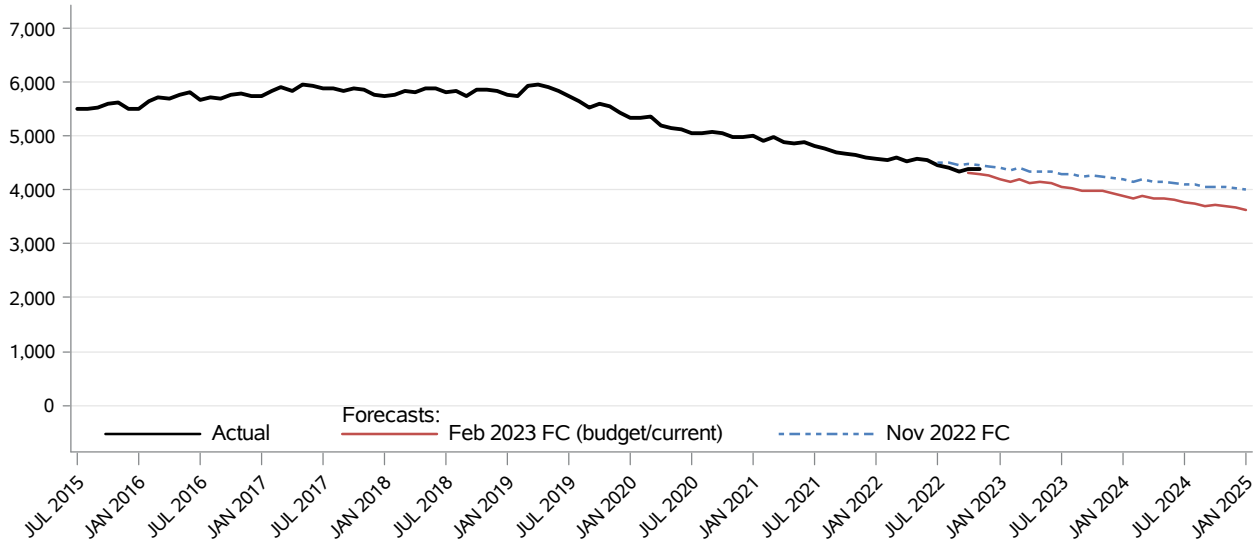


Children's Services Basic Foster Care - Receiving Care CFC Monthly Monitoring Report

The **Basic Foster Care - Receiving Care** caseload is the unduplicated count of children placed in licensed foster homes and receiving homes. The **Basic Foster Care - Receiving Care** program provides services to children who need temporary out-of-home placement due to child abuse, neglect or family conflict.



Month	Actual	Forecasts		Budget/Current Forecast and Variance		
		Nov 2022	Feb 2023	Feb 2023	N	%
JUN 2022	4,549					
JUL 2022	4,462	4,502				
AUG 2022	4,420	4,511				
SEP 2022	4,350	4,466				
OCT 2022	4,392	4,483	4,326	4,326	66	1.5%
NOV 2022	4,401	4,466	4,308	4,308	93	2.2%
DEC 2022		4,442	4,262	4,262		
JAN 2023		4,412	4,205	4,205		
FEB 2023		4,373	4,161	4,161		
MAR 2023		4,417	4,203	4,203		
APR 2023		4,353	4,134	4,134		
MAY 2023		4,353	4,143	4,143		

Data Source: FAMILINK (last update: 03/23/2023)

Children's Services
Basic Foster Care - Receiving Care
CFC Monthly Monitoring Report

Descriptions:

- **Actual:** Unduplicated count of children residing in a licensed foster home or receiving home at any time during a month.
- **Budget Forecast:** Caseload forecast adopted by the Caseload Forecast Council to serve as the basis for the biennial or supplemental budget. The actual budget may incorporate adjustments to this forecast to reflect legislation and policy decisions by the legislature subsequent to the development of the forecast.
- **Current Forecast:** Most recent forecast adopted by the Caseload Forecast Council; may be the same as the Budget Forecast.

Disclaimer of Liability:

Although the Washington State Caseload Forecast Council does all that it can to assure the accuracy of its forecasts and the data on which its forecasts are based, no warranty expressed or implied is made regarding accuracy, adequacy, completeness, legality, reliability, or usefulness of any information contained herein. This disclaimer applies to both isolated and aggregate uses of the information. If you find any errors or omissions, we encourage you to report them to the Caseload Forecast Council.