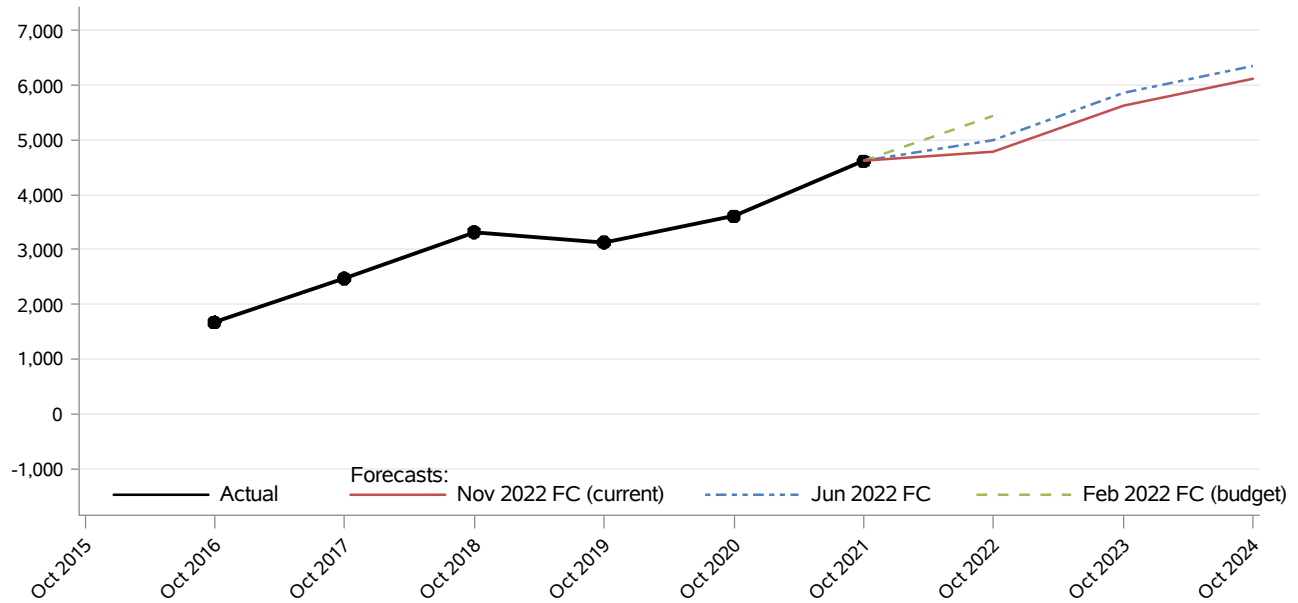


Public Education Enrollment (Charter Schools, Running Start Only)

CFC Monthly Monitoring Report

The **Enrollment** forecast includes children enrolled in grades K-12, private school students receiving services from public schools, 'home schooled' children receiving services from public schools, state funded 'summer school' students, participants in the 'Running Start' program, and participants in the University of Washington Transition program. Charter School enrollment is forecast as a ten month annual average 'Full Time Equivalent' (FTE), where one FTE is the equivalent of one student enrolled full time.



Month	Actual	Forecasts			Budget Forecast and Variance			Current Forecast and Variance		
		Feb 2022	Jun 2022	Nov 2022	Feb 2022	N	%	Nov 2022	N	%
Oct 2016	1,677									
Oct 2017	2,475									
Oct 2018	3,325									
Oct 2019	3,140									
Oct 2020	3,613									
Oct 2021	4,617	4,635	4,635	4,617	4,635	-18	(0.4%)	4,617	0	0.0%
Oct 2022		5,439	5,001	4,778	5,439			4,778		
Oct 2023			5,864	5,621				5,621		
Oct 2024			6,360	6,113				6,113		

Data Source: Superintendent of Public Instruction (SPI) (last update: 11/07/2022)

Public Education
Enrollment (Charter Schools, Running Start Only)
CFC Monthly Monitoring Report

Descriptions:

- **Actual:** October enrollment in Charter Schools, including Running Start.
- **Budget Forecast:** Caseload forecast adopted by the Caseload Forecast Council to serve as the basis for the biennial or supplemental budget. The actual budget may incorporate adjustments to this forecast to reflect legislation and policy decisions by the legislature subsequent to the development of the forecast.
- **Current Forecast:** Most recent forecast adopted by the Caseload Forecast Council; may be the same as the Budget Forecast.

Special Notes:

The chart and tables present the October Enrollment, while the official caseload forecast is the 'annual average.' The October enrollment is used here because it allows the display of the current year before the annual average is available and because the October enrollment is used to forecast future school years. The October enrollment will differ from the annual average, but is typically a good proxy for the final annual average.

Disclaimer of Liability:

Although the Washington State Caseload Forecast Council does all that it can to assure the accuracy of its forecasts and the data on which its forecasts are based, no warranty expressed or implied is made regarding accuracy, adequacy, completeness, legality, reliability, or usefulness of any information contained herein. This disclaimer applies to both isolated and aggregate uses of the information. If you find any errors or omissions, we encourage you to report them to the Caseload Forecast Council.