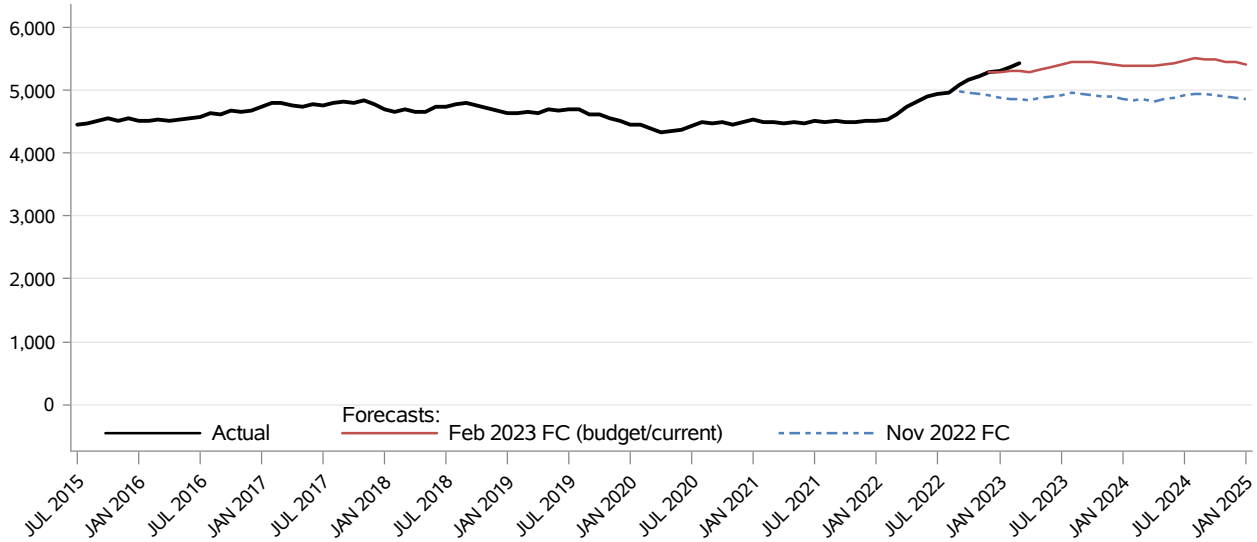


Economic Services Administration Aged, Blind and Disabled Assistance Grant – Aged CFC Monthly Monitoring Report

The **Aged, Blind and Disabled Assistance** program provides financial assistance to persons whose long-term mental and/or physical disabilities likely qualify them for the federal Supplemental Security Income (SSI) program, regardless of citizenship status. This forecast is one of the three components of the program – clients 65 years and older who are not presumed to be eligible for the federal SSI grant.



Month	Actual	Forecasts		Budget/Current Forecast and Variance		
		Nov 2022	Feb 2023	Feb 2023	N	%
OCT 2022	5,177	4,974				
NOV 2022	5,237	4,941				
DEC 2022	5,291	4,923	5,293	5,293	-2	(0.0%)
JAN 2023	5,314	4,892	5,299	5,299	15	0.3%
FEB 2023	5,379	4,864	5,306	5,306	73	1.4%
MAR 2023	5,437	4,872	5,320	5,320	117	2.2%
APR 2023		4,844	5,304	5,304		
MAY 2023		4,880	5,342	5,342		
JUN 2023		4,899	5,374	5,374		
JUL 2023		4,926	5,411	5,411		
AUG 2023		4,958	5,455	5,455		
SEP 2023		4,946	5,454	5,454		

Data Source: DSHS ACES (last update: 04/04/2023)

Economic Services Administration
Aged, Blind and Disabled Assistance Grant – Aged
CFC Monthly Monitoring Report

Descriptions:

- **Actual:** Cases, defined as units of one or more related individuals whose needs are covered by a single money grant, service or vendor payment. The data are lag adjusted and the most recent month of data is not shown.
- **Budget Forecast:** Caseload forecast adopted by the Caseload Forecast Council to serve as the basis for the biennial or supplemental budget. The actual budget may incorporate adjustments to this forecast to reflect legislation and policy decisions by the legislature subsequent to the development of the forecast.
- **Current Forecast:** Most recent forecast adopted by the Caseload Forecast Council; may be the same as the Budget Forecast.

Disclaimer of Liability:

Although the Washington State Caseload Forecast Council does all that it can to assure the accuracy of its forecasts and the data on which its forecasts are based, no warranty expressed or implied is made regarding accuracy, adequacy, completeness, legality, reliability, or usefulness of any information contained herein. This disclaimer applies to both isolated and aggregate uses of the information. If you find any errors or omissions, we encourage you to report them to the Caseload Forecast Council.