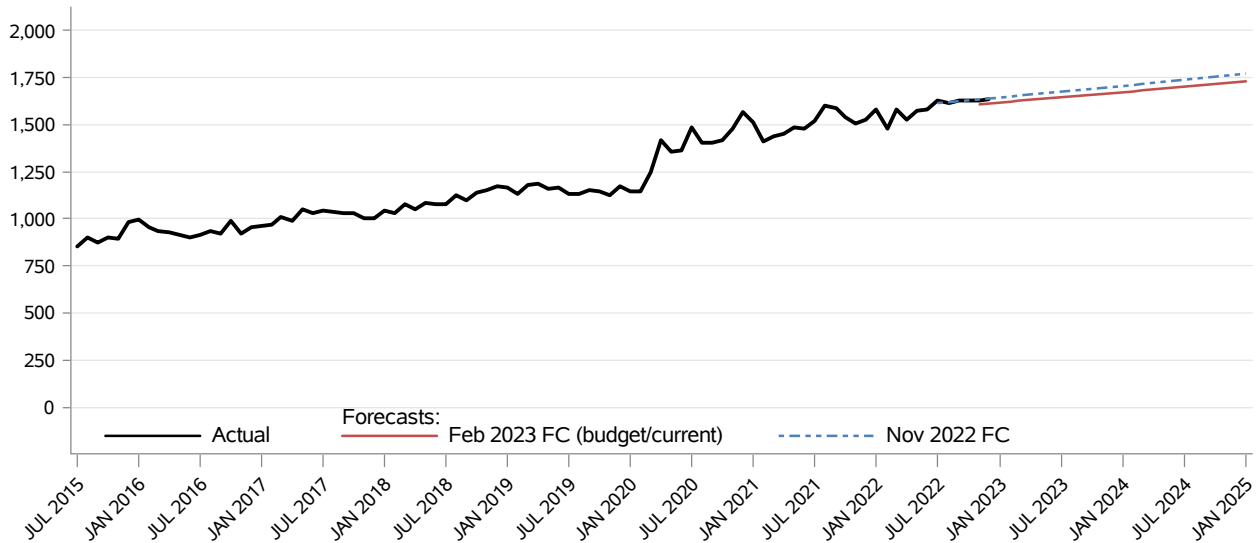


Medical Services Alien Emergency Medical CFC Monthly Monitoring Report

The **Alien Emergency Medical** covers health care services to treat qualifying emergency medical conditions. To be eligible for AEM, an individual must: • Be categorically relatable to a Medicaid program but not eligible for the Medicaid program solely due to immigration status requirements; and • Have a qualifying emergency medical. Health programs with CN, ABP, or MN scope of care and meet the eligibility criteria for either the Aged, Blind or Disabled–cash or the Housing Essential Needs (HEN) program.



Month	Actual	Forecasts		Budget/Current Forecast and Variance		
		Nov 2022	Feb 2023	Feb 2023	N	%
JUL 2022	1,628	1,612				
AUG 2022	1,614	1,617				
SEP 2022	1,630	1,622				
OCT 2022	1,629	1,627				
NOV 2022	1,629	1,632	1,610	1,610	19	1.2%
DEC 2022	1,633	1,637	1,615	1,615	18	1.1%
JAN 2023		1,643	1,619	1,619		
FEB 2023		1,648	1,624	1,624		
MAR 2023		1,653	1,628	1,628		
APR 2023		1,658	1,633	1,633		
MAY 2023		1,664	1,638	1,638		
JUN 2023		1,669	1,642	1,642		

Data Source: HCA Provider One (last update: 03/06/2023)

Medical Services
Alien Emergency Medical
CFC Monthly Monitoring Report

Descriptions:

- **Actual:** The number of clients eligible at any time during the month and are lag adjusted up to 24 months and the most recent two months of data are not shown.
- **Budget Forecast:** Caseload forecast adopted by the Caseload Forecast Council to serve as the basis for the biennial or supplemental budget. The actual budget may incorporate adjustments to this forecast to reflect legislation and policy decisions by the legislature subsequent to the development of the forecast.
- **Current Forecast:** Most recent forecast adopted by the Caseload Forecast Council; may be the same as the Budget Forecast.

Disclaimer of Liability:

Although the Washington State Caseload Forecast Council does all that it can to assure the accuracy of its forecasts and the data on which its forecasts are based, no warranty expressed or implied is made regarding accuracy, adequacy, completeness, legality, reliability, or usefulness of any information contained herein. This disclaimer applies to both isolated and aggregate uses of the information. If you find any errors or omissions, we encourage you to report them to the Caseload Forecast Council.