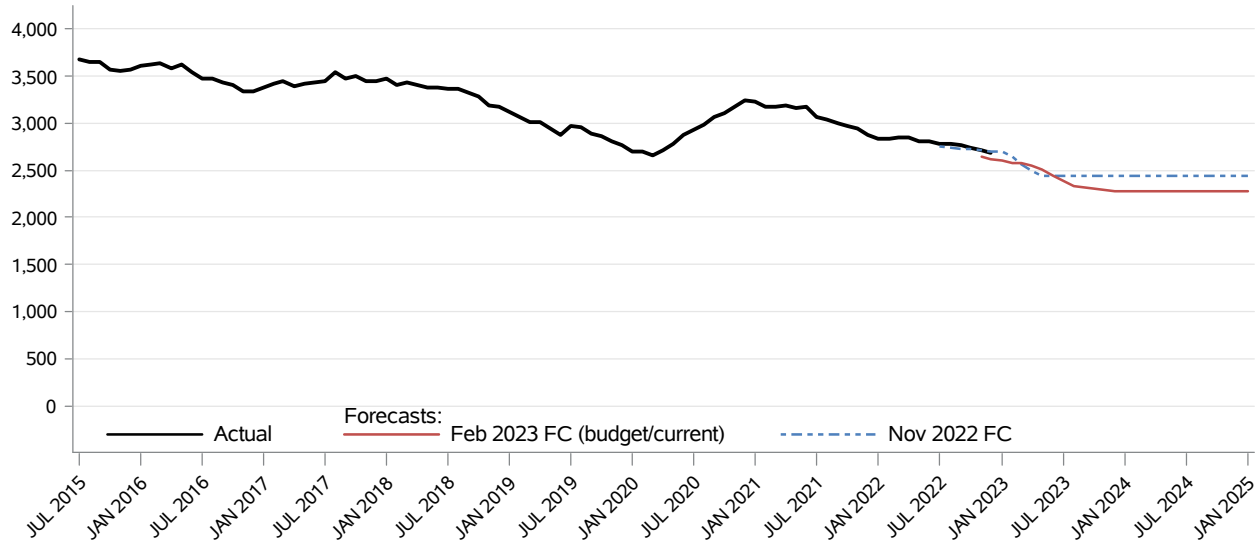


Medical Services Medically Needy Blind and People with Disabilities CFC Monthly Monitoring Report

The **Medically Needy Blind and People with Disabilities** program provides medical assistance to persons who are dually eligible for Medicare and Medicaid who meet federal disability or sight loss criteria and have insufficient funds to pay their medical bills, but whose income and resources are too high for them to qualify as Categorically Needy.



Month	Actual	Forecasts		Budget/Current Forecast and Variance		
		Nov 2022	Feb 2023	Feb 2023	N	%
JUL 2022	2,788	2,750				
AUG 2022	2,782	2,747				
SEP 2022	2,774	2,733				
OCT 2022	2,744	2,722				
NOV 2022	2,719	2,713	2,644	2,644	75	2.8%
DEC 2022	2,689	2,702	2,618	2,618	71	2.7%
JAN 2023		2,697	2,599	2,599		
FEB 2023		2,645	2,578	2,578		
MAR 2023		2,568	2,576	2,576		
APR 2023		2,496	2,549	2,549		
MAY 2023		2,448	2,503	2,503		
JUN 2023		2,441	2,443	2,443		

Data Source: HCA Provider One (last update: 03/06/2023)

Medical Services
Medically Needy Blind and People with Disabilities
CFC Monthly Monitoring Report

Descriptions:

- **Actual:** The number of clients eligible at any time during the month and are lag adjusted up to 24
- **Budget Forecast:** Caseload forecast adopted by the Caseload Forecast Council to serve as the basis for the biennial or supplemental budget. The actual budget may incorporate adjustments to this forecast to reflect legislation and policy decisions by the legislature subsequent to the development of the forecast.
- **Current Forecast:** Most recent forecast adopted by the Caseload Forecast Council; may be the same as the Budget Forecast.

Disclaimer of Liability:

Although the Washington State Caseload Forecast Council does all that it can to assure the accuracy of its forecasts and the data on which its forecasts are based, no warranty expressed or implied is made regarding accuracy, adequacy, completeness, legality, reliability, or usefulness of any information contained herein. This disclaimer applies to both isolated and aggregate uses of the information. If you find any errors or omissions, we encourage you to report them to the Caseload Forecast Council.