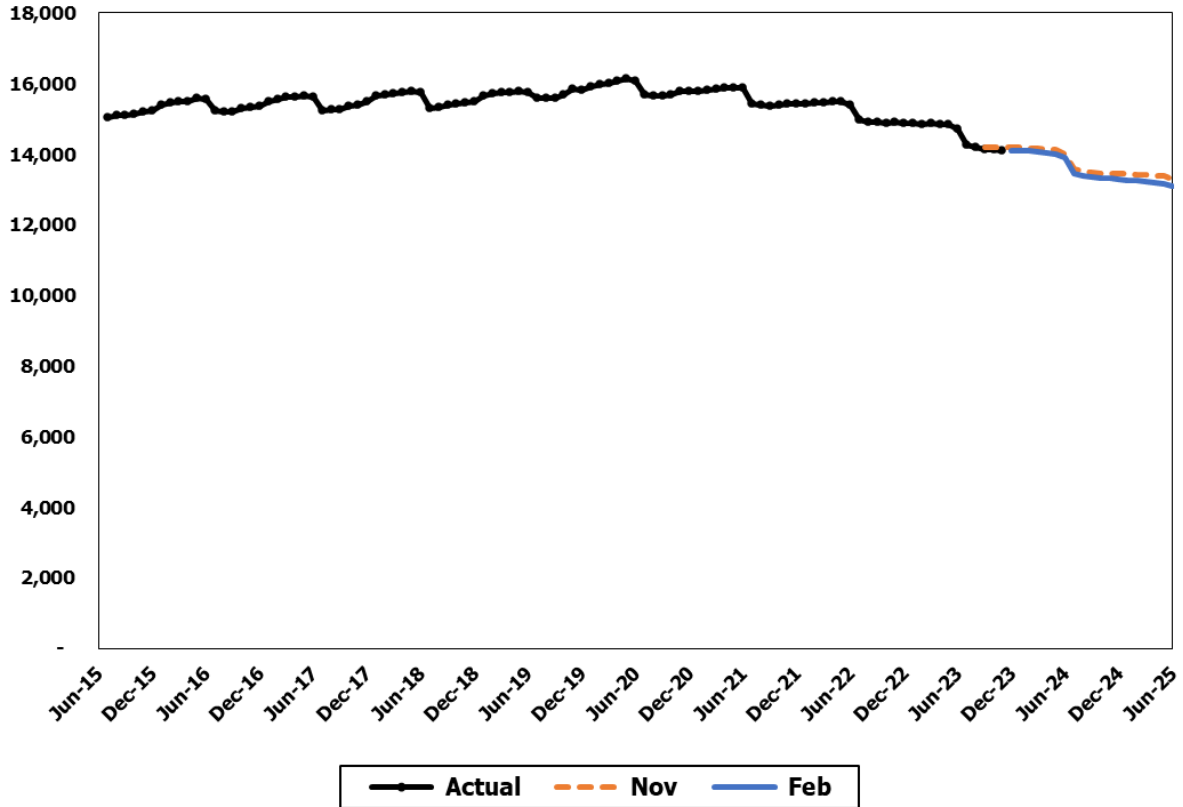


Adoption Support Maintenance Payments



The Adoption Support Maintenance Payment (ASMP) caseload forecast includes eligible adoptive families receiving monthly adoption support maintenance payments.

Forecast Comparisons (Fiscal Year Averages)

Fiscal Year	Nov-23 Forecast	Feb-24 Forecast	Nov to Feb Difference	Percent Difference
2024	14,164	14,093	-71	-0.5%
2025	13,447	13,275	-171	-1.3%

The February 2024 forecast is, on average, 121 cases or 0.9 percent lower than the November 2023 forecast for the 2023-25 Biennium.

Tracking the Current Forecast

Month	Nov-23 Forecast	Actual	Variance	Percent Variance
Sep-23	14,205	14,122	-83	-0.6%
Oct-23	14,184	14,123	-61	-0.4%
Nov-23	14,188	14,108	-80	-0.6%

Actuals are tracking, on average, 75 cases or 0.5 percent below the November forecast.

Fiscal Year Caseload Change

	Fiscal Year	Caseload	Change from Prior Year	Percent Change
Actual	2016	15,317		
	2017	15,432	115	0.8%
	2018	15,530	98	0.6%
	2019	15,566	36	0.2%
	2020	15,859	293	1.9%
	2021	15,782	-77	-0.5%
	2022	15,430	-352	-2.2%
	2023	14,874	-556	-3.6%
Forecast	2024	14,093	-781	-5.2%
	2025	13,275	-818	-5.8%

While the COVID-19 pandemic had a smaller initial impact on the ASMP caseload than on some other services for children, average case counts have moved gradually lower since FY 2020. It is possible that the decline in the number of children in foster care over the last several years may be having a downstream impact on adoptions. Additionally, this forecast includes a step adjustment to reflect the impact of expanded guardianship supports under ESSB 5214 (Chapter 221, Laws of 2023), which is expected to result in both an increase in the number of children placed into guardianship and a corresponding reduction in adoptions.

Risks to the Forecast

ASMP has historically had a stable caseload. Risks to this forecast remain low but are elevated compared to recent years due to uncertainty surrounding the downward trend observed since FY 2020.