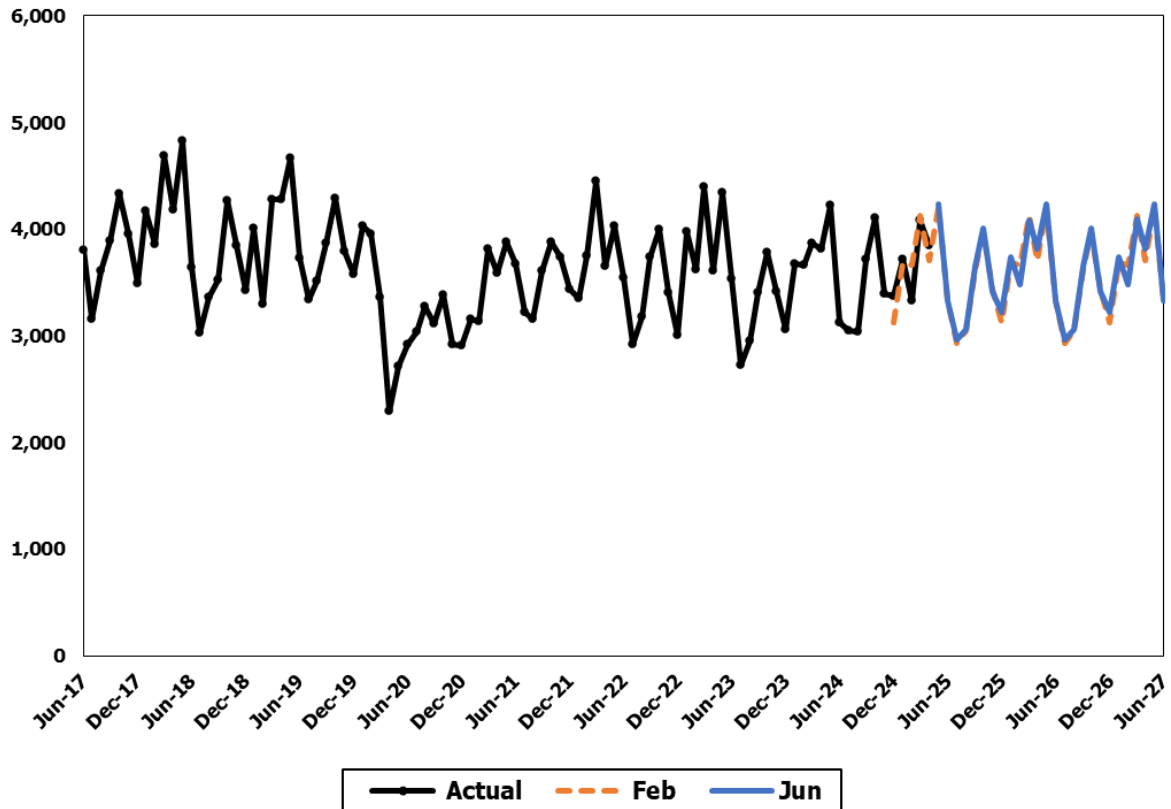


**Screened-In Reports**



The Screened-In Reports caseload is the number of cases that are accepted for investigation or assessment after reports of possible child abuse or neglect.

**Forecast Comparisons (Fiscal Year Averages)**

Fiscal Year	Feb-25 Forecast	Jun-25 Forecast	Feb to June Difference	Percent Difference
2025	3,596	3,603	7	0.2%
2026	3,573	3,584	11	0.3%
2027	3,573	3,585	12	0.3%

Compared to February, the June 2025 forecast is 7 cases or 0.2 percent higher for FY 2025 and, on average, 12 cases or 0.3 percent higher for the 2025-27 Biennium.

### Tracking the Current Forecast

Month	Feb-25 Forecast	Actual	Variance	Percent Variance
Dec-24	3,128	3,374	246	7.9%
Jan-25	3,686	3,723	37	1.0%
Feb-25	3,664	3,324	-340	-9.3%
Mar-25	4,133	4,081	-52	-1.3%
Feb-25	3,707	3,851	144	3.9%

Actuals are tracking, on average, 7 cases or 0.2 percent above the February 2025 forecast.

### Fiscal Year Caseload Change

	Fiscal Year	Caseload	Change from Prior Year	Percent Change
Actual	2018	3,984		
	2019	3,808	-176	-4.4%
	2020	3,472	-336	-8.8%
	2021	3,324	-148	-4.3%
	2022	3,652	328	9.9%
	2023	3,642	-10	-0.3%
	2024	3,476	-167	-4.6%
Forecast	2025	3,603	127	3.7%
	2026	3,584	-19	-0.5%
	2027	3,585	1	0.0%

### Risks to the Forecast

Risks to the February forecast are low to moderate. Historically, this has been a volatile caseload. Additionally, the standards for removal of a child from parental custody were changed as of June 30, 2023, due to 2SHB 1227 (Chapter 211, Laws of 2021) and again by E2SSB 6109 (Chapter 328, Laws of 2024). The effect these changes may have on the reporting of possible abuse and on the number of screened-in cases over a longer term is unknown.

Forecast Contact:  
Erik Sund  
360-664-9374  
erik.sund@cfc.wa.gov