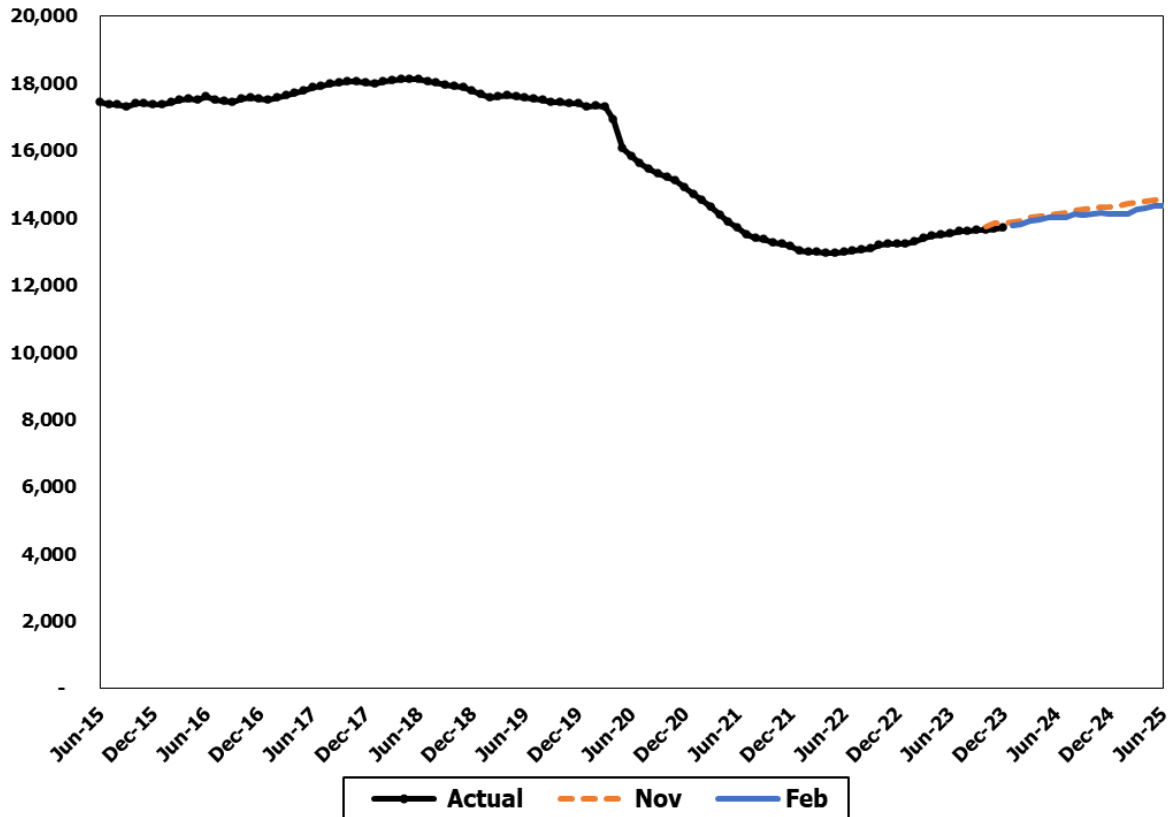


**Adult Inmate**



The Adult Inmate forecast includes adult criminal sentences under the state’s jurisdiction and housed in prisons and partial confinement facilities. The forecast includes the effects of changing demographics, offense types, and policy changes (new legislation or initiatives).

**Forecast Comparisons (Fiscal Year Averages)**

Fiscal Year	Nov-23 Forecast	Feb-24 Forecast	Nov to Feb Difference	Percent Difference
2024	13,847	13,764	-83	-0.6%
2025	14,355	14,160	-195	-1.4%

The February 2024 forecast is, on average, 139 cases or 1.0 percent lower than the November 2023 forecast for the 2023-25 Biennium.

### Tracking the Current Forecast

Month	Nov-23		Variance	Percent
	Forecast	Actual		Variance
Oct-23	13,722	13,638	-84	-0.6%
Nov-23	13,830	13,647	-183	-1.3%
Dec-23	13,822	13,688	-134	-1.0%

Actuals are tracking, on average, 134 cases or 1.0 percent below the November forecast. The breakdown of the actuals by gender shows that the average monthly actuals for males came 141 cases lower than previously forecasted for October through December, while the female caseload, which comprises approximately 6 percent of the total inmate population, came 7 cases higher during the same 3-month period.

There is a noticeable discrepancy between the previously forecasted and actual admissions for males and females as well in the recent months, which is the main reason for the November caseload forecast variance. Considering this, the February forecast now projects lower male admissions and higher female admissions for FY 24 and FY25 compared to the November forecast. In addition, this forecast continues to include step adjustments for the incremental impacts of two recently passed bills: EHB 1324 concerning the scoring of prior juvenile offenses in sentencing range calculations and ESHB 1394 pertaining to sex offense registration requirements.

### Fiscal Year Caseload Change

	Fiscal Year	Caseload	Change from	
			Prior Year	Percent Change
Actual	2016	17,415		
	2017	17,580	166	1.0%
	2018	18,035	454	2.6%
	2019	17,766	-269	-1.5%
	2020	17,111	-655	-3.7%
	2021	14,725	-2,386	-13.9%
	2022	13,138	-1,586	-10.8%
	2023	13,254	116	0.9%
Forecast	2024	13,764	510	3.8%
	2025	14,160	396	2.9%

#### *Risks to the Forecast*

Risks to this forecast are moderate. There is continuing uncertainty surrounding the impact of COVID-19 on the timeline for increased capacity in the criminal justice system in the short-term for backlogged cases as well as the long-term for future case volume.

*Forecast Contact:*  
 Alex Ge  
 360-515-3134  
 alex.ge@cfc.wa.gov