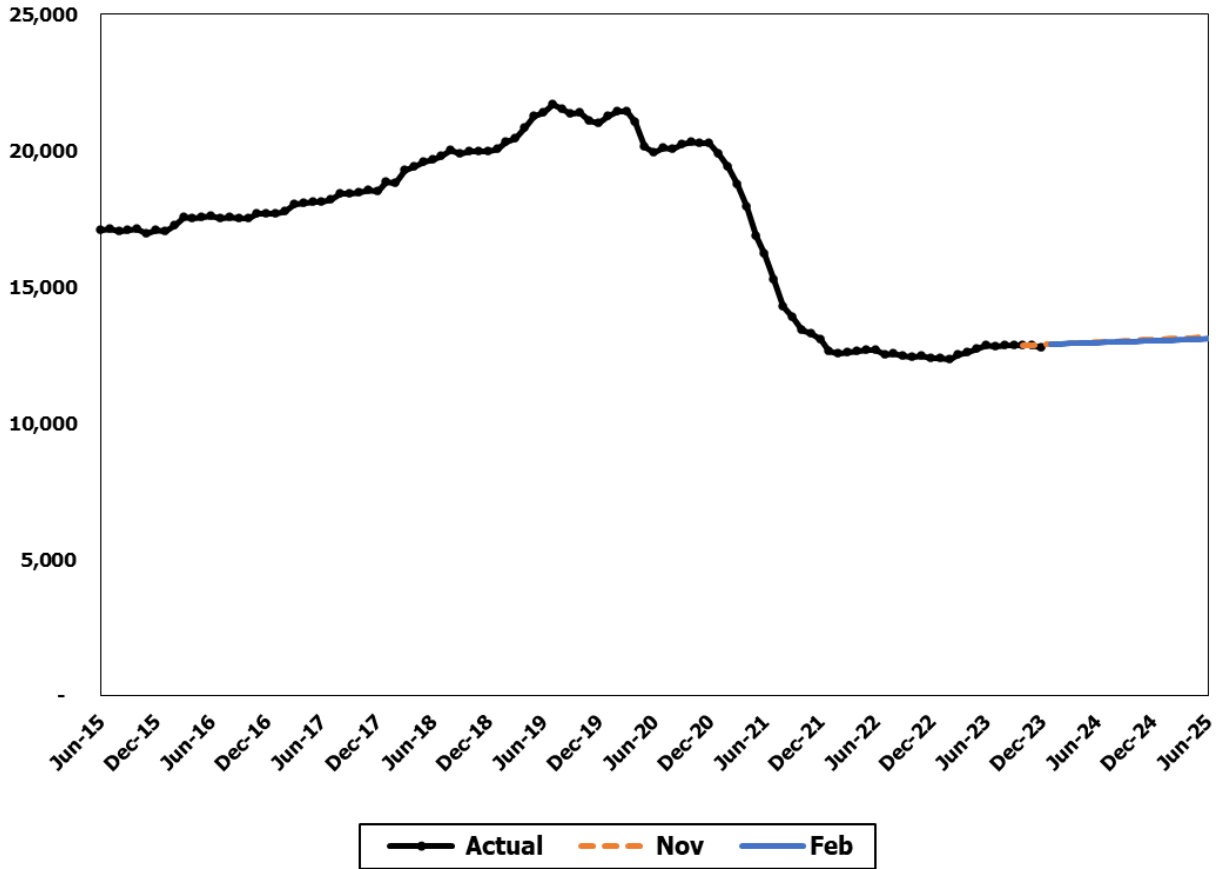


Contact-Required Community Supervision



The Contact-Required Community Supervision caseload includes adults who have been convicted of a crime(s), are actively supervised by the Department of Corrections (DOC), and have requirements to maintain contact with the DOC.

Forecast Comparisons (Fiscal Year Averages)

Fiscal Year	Nov-23 Forecast	Feb-24 Forecast	Nov to Feb Difference	Percent Difference
2024	12,889	12,873	-16	-0.1%
2025	13,068	13,025	-43	-0.3%

The February 2024 forecast is, on average, 29 cases or 0.2 percent lower than the November 2023 forecast for the 2023-25 Biennium.

Tracking the Current Forecast

Month	Nov-23		Variance	Percent
	Forecast	Actual		Variance
Oct-23	12,863	12,870	7	0.1%
Nov-23	12,868	12,871	3	0.0%
Dec-23	12,882	12,757	-125	-1.0%

Actuals are tracking, on average, 38 cases or 0.3 percent below the November forecast.

The slightly lower average caseload for the 2023-25 Biennium in this forecast compared to the November forecast is mainly driven by the lower actuals observed in the recent months.

Fiscal Year Caseload Change

	Fiscal Year	Caseload	Change from	
			Prior Year	Percent Change
Actual	2016	17,236		
	2017	17,771	536	3.1%
	2018	18,839	1,068	6.0%
	2019	20,317	1,478	7.8%
	2020	21,093	776	3.8%
	2021	19,185	-1,909	-9.0%
	2022	13,238	-5,947	-31.0%
	2023	12,512	-726	-5.5%
Forecast	2024	12,873	361	2.9%
	2025	13,025	152	1.2%

Risks to the Forecast

Risks to this forecast are moderate. There continues to be COVID-19 related impacts to the criminal justice system that affect caseload entries and duration of stay, which creates uncertainty for the long-term trend.