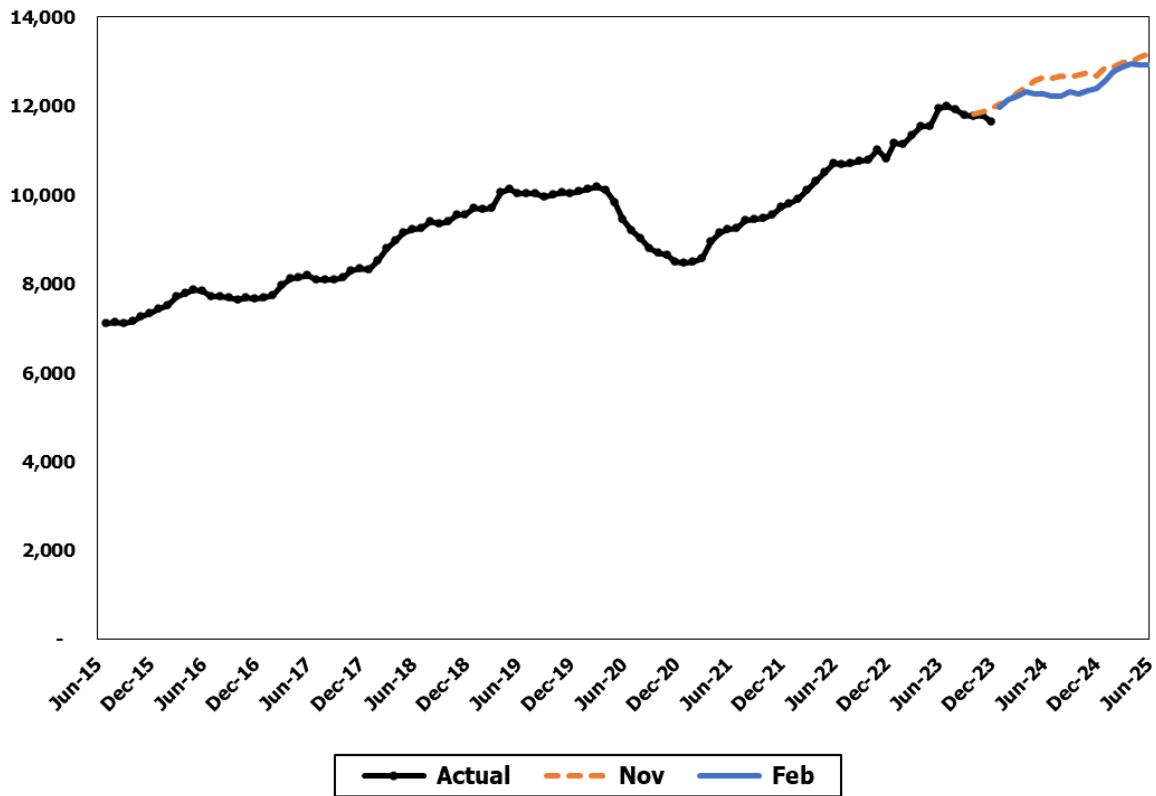


Early Support for Infants and Toddlers

Caseload Forecast Council
February 16, 2024

Early Support for Infants and Toddlers (ESIT) (Unofficial Courtesy Forecast)



The Early Support for Infants and Toddlers program (ESIT) coordinates and provides services for eligible infants and toddlers and is administered by the Department of Children, Youth, and Families (DCYF). The ESIT caseload is defined as the number of children with active Individualized Family Service Plans (IFSPs). Children are evaluated and become eligible if found to have specific developmental delays. As of September 1, 2020, ESIT includes state funded services previously provided through Special Education Birth to Age 2.

Forecast Comparisons (Fiscal Year Averages)

Fiscal Year	Nov-23 Forecast	Feb-24 Forecast	Nov to Feb Difference	Percent Difference
2024	12,117	12,010	-107	-0.9%
2025	12,837	12,566	-271	-2.1%

The February 2024 forecast is, on average, 189 cases or 1.5 percent lower than the November 2023 forecast for the 2023-25 Biennium.

Forecast Contact:
Paula Moore
360-664-9376
paula.moore@cfc.wa.gov

Tracking the Current Forecast

Month	Nov-23		Variance	Percent
	Forecast	Actual		Variance
Oct-23	11,820	11,774	-46	-0.4%
Nov-23	11,855	11,779	-76	-0.6%
Dec-23	11,946	11,651	-295	-2.5%

Actuals are tracking, on average, 139 cases or 1.2 percent below the November forecast.

Fiscal Year Caseload Change

	Fiscal Year	Caseload	Change from Prior Year	Percent Change
Actual	2016	7,436		
	2017	7,832	396	5.3%
	2018	8,500	668	8.5%
	2019	9,649	1,149	13.5%
	2020	9,991	342	3.5%
	2021	8,808	-1,182	-11.8%
	2022	9,849	1,041	11.8%
	2023	11,116	1,267	12.9%
Forecast	2024	12,010	894	8.0%
	2025	12,566	556	4.6%

The COVID-19 pandemic resulted in a sharp decline in the ESIT caseload starting in March of 2020. The program experienced reductions in referrals, entries, and active participants. The decline ended in January 2021, and growth returned as vaccines became available for providers and adult caregivers. In total, for FY 2021, the ESIT caseload declined by 11.8 percent due to COVID-19. That loss was reversed in FY 2022, with 11.8 percent growth, followed by 12.9 percent growth in FY 2023. The ESIT caseload is forecasted to grow 8.0 percent in FY 2024 and 4.6 percent in FY 2025.

Risks to the Forecast

Risks to the February 2024 forecast are moderate. Historically, policy changes and fluctuating birth rates have been the largest drivers of change for this forecast.