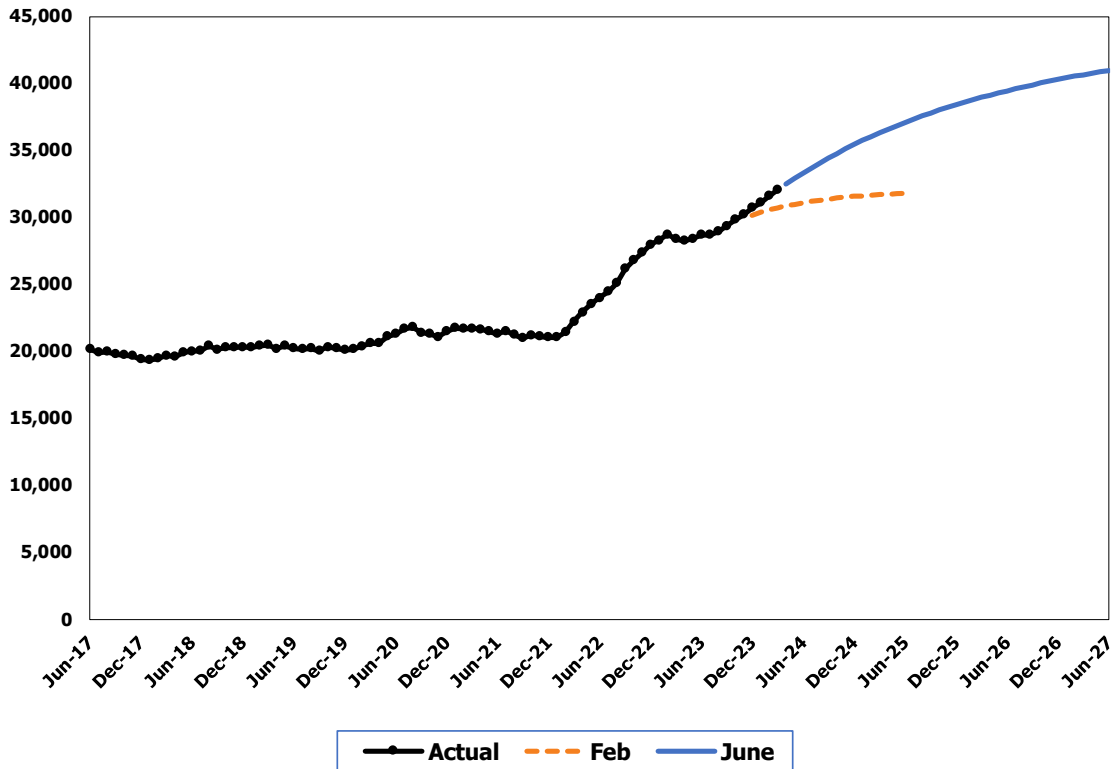


Aged, Blind and Disabled Assistance Grant Program – Total Caseload



The Aged, Blind and Disabled Assistance program (ABD) provides financial assistance to persons whose long-term mental and/or physical disabilities likely qualify them for the federal Supplemental Security Income (SSI) program, regardless of citizenship status. This forecast includes three components: Presumptive SSI, Aged, and Disabled.

Forecast Comparisons (Fiscal Year Averages)

Fiscal Year	Feb-24 Forecast	Jun-24 Forecast	Feb to Jun Difference	Percent Difference
2024	30,131	30,937	806	2.7%
2025	31,564	35,517	3,953	12.5%
2026		38,482		
2027		40,341		

The June 2024 forecast is, on average, 2,380 cases or 7.7 percent higher than the February forecast for the 2023-25 Biennium. The variance in the current forecast is driven by the recent larger-than-normal number of immigrants utilizing ABD Aged as well as growth in PSSI possibly due to longer wait times for Social Security processing.

Forecast Contact:
W. Webb Sprague
360-664-9382
webb.sprague@cfc.wa.gov

ABD-Aged and PSSI forecasts have about the same month-over-month increase of 1.0 percent to 1.5 percent. The flow of immigrants is driven by a combination of worldwide social conditions and federal policy, both very hard to predict. Higher levels of immigration are assumed through calendar year 2024 based on federal Congressional Budget Office projections.

Tracking the Current Forecast

Month	Feb-24	Actual	Variance	Percent
	Forecast			Variance
Dec-23	32,380	32,785	405	1.3%
Jan-24	32,546	33,506	960	2.9%
Feb-24	32,682	33,730	1,048	3.2%
Mar-24	32,819	33,942	1,123	3.4%

Actuals are tracking, on average, 901 cases or 3.0 percent above the February forecast.

Fiscal Year Caseload Change

	Fiscal Year	Caseload	Change from Prior Year	Percent Change
Actual	2018	19,707		
	2019	20,293	586	3.0%
	2020	20,442	149	0.7%
	2021	21,529	1087	5.3%
	2022	21,857	328	1.5%
	2023	27,388	5531	25.3%
Forecast	2024	30,937	3549	13.0%
	2025	35,517	4580	14.8%
	2026	38,482	2965	8.3%
	2027	40,341	1859	4.8%

Risks to the Forecast

The risks to the forecast are moderate. Both the PSSI and ABD Aged forecasts assume continuing upward trends in immigration. This caseload is heavily impacted by changing economic conditions.

Additionally, Ukrainian humanitarian parolees who were previously only eligible for state benefits because they were paroled into the U.S. after Sept. 30, 2023, are now eligible for federally funded benefits if they are paroled into the U.S. before Sept. 30, 2024. There is a risk this change may lead to a drop in the ABD Aged caseload as these clients use Refugee Cash Assistance instead for their first year in the US.

There is also a risk that the June 4 presidential proclamation limiting access for asylum seekers may lead to a drop in ABD-Aged.

Forecast Contact:
W. Webb Sprague
360-664-9382
webb.sprague@cfc.wa.gov