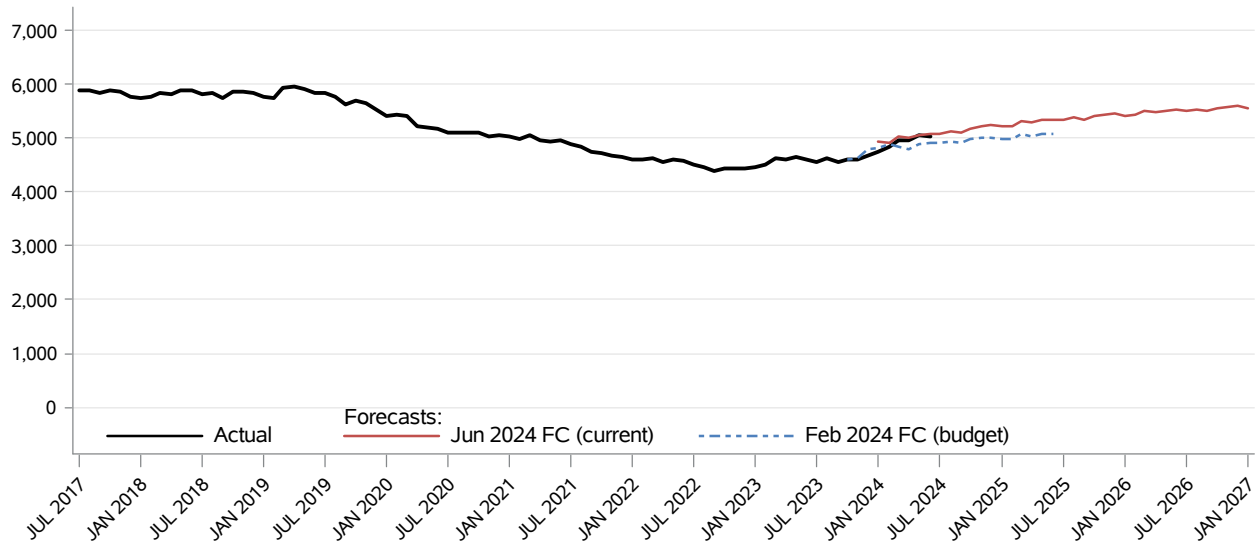


Children's Services Basic Foster Care - Receiving Care

CFC Monthly Monitoring Report

The **Basic Foster Care - Receiving Care** caseload is the unduplicated count of children placed in licensed foster homes and receiving homes. The **Basic Foster Care - Receiving Care** program provides services to children who need temporary out-of-home placement due to child abuse, neglect or family conflict.



Month	Actual	Forecasts		Budget Forecast and Variance			Current Forecast and Variance		
		Feb 2024	Jun 2024	Feb 2024	N	%	Jun 2024	N	%
JAN 2024	4,738	4,825	4,935	4,825	-87	(1.8%)	4,935	-197	(4.0%)
FEB 2024	4,838	4,895	4,925	4,895	-57	(1.2%)	4,925	-87	(1.8%)
MAR 2024	4,958	4,847	5,026	4,847	111	2.3%	5,026	-68	(1.4%)
APR 2024	4,974	4,791	5,003	4,791	183	3.8%	5,003	-29	(0.6%)
MAY 2024	5,048	4,885	5,059	4,885	163	3.3%	5,059	-11	(0.2%)
JUN 2024	5,027	4,908	5,088	4,908	119	2.4%	5,088	-61	(1.2%)
JUL 2024		4,910	5,094	4,910			5,094		
AUG 2024		4,937	5,136	4,937			5,136		
SEP 2024		4,909	5,116	4,909			5,116		
OCT 2024		4,982	5,184	4,982			5,184		
NOV 2024		5,008	5,216	5,008			5,216		
DEC 2024		5,005	5,239	5,005			5,239		

Data Source: FAMLINK (last update: 10/29/2024)

Children's Services
Basic Foster Care - Receiving Care
CFC Monthly Monitoring Report

Descriptions:

- **Actual:** Unduplicated count of children residing in a licensed foster home or receiving home at any time during a month.
- **Budget Forecast:** Caseload forecast adopted by the Caseload Forecast Council to serve as the basis for the biennial or supplemental budget. The actual budget may incorporate adjustments to this forecast to reflect legislation and policy decisions by the legislature subsequent to the development of the forecast.
- **Current Forecast:** Most recent forecast adopted by the Caseload Forecast Council; may be the same as the Budget Forecast.

Disclaimer of Liability:

Although the Washington State Caseload Forecast Council does all that it can to assure the accuracy of its forecasts and the data on which its forecasts are based, no warranty expressed or implied is made regarding accuracy, adequacy, completeness, legality, reliability, or usefulness of any information contained herein. This disclaimer applies to both isolated and aggregate uses of the information. If you find any errors or omissions, we encourage you to report them to the Caseload Forecast Council.