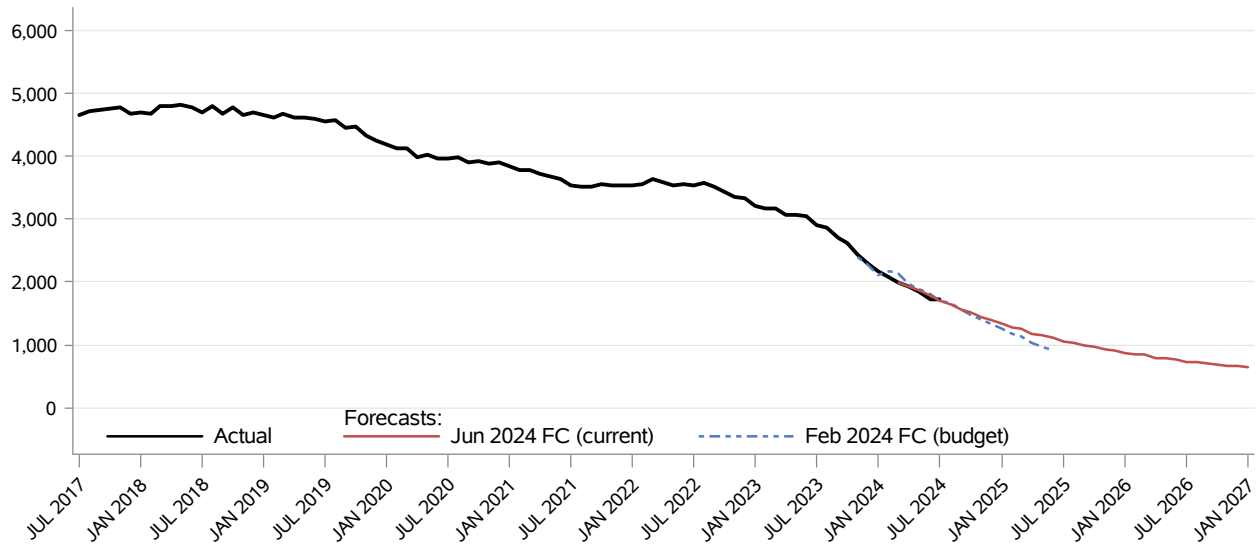


## Children's Services Unlicensed Foster Care CFC Monthly Monitoring Report

The **Unlicensed Foster Care** caseload is the unduplicated count of children placed in unlicensed foster homes. The **Unlicensed Foster Care** program provides services to children who need temporary out-of-home placement due to child abuse, neglect or family conflict. The Unlicensed Foster Care caseload typically reside in homes with relatives or close family friends. The foster parents do not receive a state maintenance payment, but the foster children are eligible for TANF Child Only monthly cash grants. The caseload is supervised by state caseworkers and subject to in-home visits.



Month	Actual	Forecasts		Budget Forecast and Variance			Current Forecast and Variance		
		Feb 2024	Jun 2024	Feb 2024	N	%	Jun 2024	N	%
FEB 2024	2,067	2,167		2,167	-100	(4.6%)			
MAR 2024	1,996	2,131	1,999	2,131	-135	(6.3%)	1,999	-3	(0.2%)
APR 2024	1,919	1,961	1,935	1,961	-42	(2.1%)	1,935	-16	(0.8%)
MAY 2024	1,848	1,892	1,865	1,892	-44	(2.3%)	1,865	-17	(0.9%)
JUN 2024	1,723	1,815	1,791	1,815	-92	(5.1%)	1,791	-68	(3.8%)
JUL 2024	1,715	1,710	1,695	1,710	5	0.3%	1,695	20	1.2%
AUG 2024		1,654	1,648	1,654			1,648		
SEP 2024		1,554	1,561	1,554			1,561		
OCT 2024		1,489	1,516	1,489			1,516		
NOV 2024		1,408	1,448	1,408			1,448		
DEC 2024		1,336	1,399	1,336			1,399		
JAN 2025		1,250	1,332	1,250			1,332		

Data Source: FAMLINK (last update: 10/29/2024)

**Children's Services**  
**Unlicensed Foster Care**  
CFC Monthly Monitoring Report

Descriptions:

- **Actual:** Unduplicated count of children residing in an unlicensed foster home at any time during a reported month.
- **Budget Forecast:** Caseload forecast adopted by the Caseload Forecast Council to serve as the basis for the biennial or supplemental budget. The actual budget may incorporate adjustments to this forecast to reflect legislation and policy decisions by the legislature subsequent to the development of the forecast.
- **Current Forecast:** Most recent forecast adopted by the Caseload Forecast Council; may be the same as the Budget Forecast.

**Disclaimer of Liability:**

Although the Washington State Caseload Forecast Council does all that it can to assure the accuracy of its forecasts and the data on which its forecasts are based, no warranty expressed or implied is made regarding accuracy, adequacy, completeness, legality, reliability, or usefulness of any information contained herein. This disclaimer applies to both isolated and aggregate uses of the information. If you find any errors or omissions, we encourage you to report them to the Caseload Forecast Council.