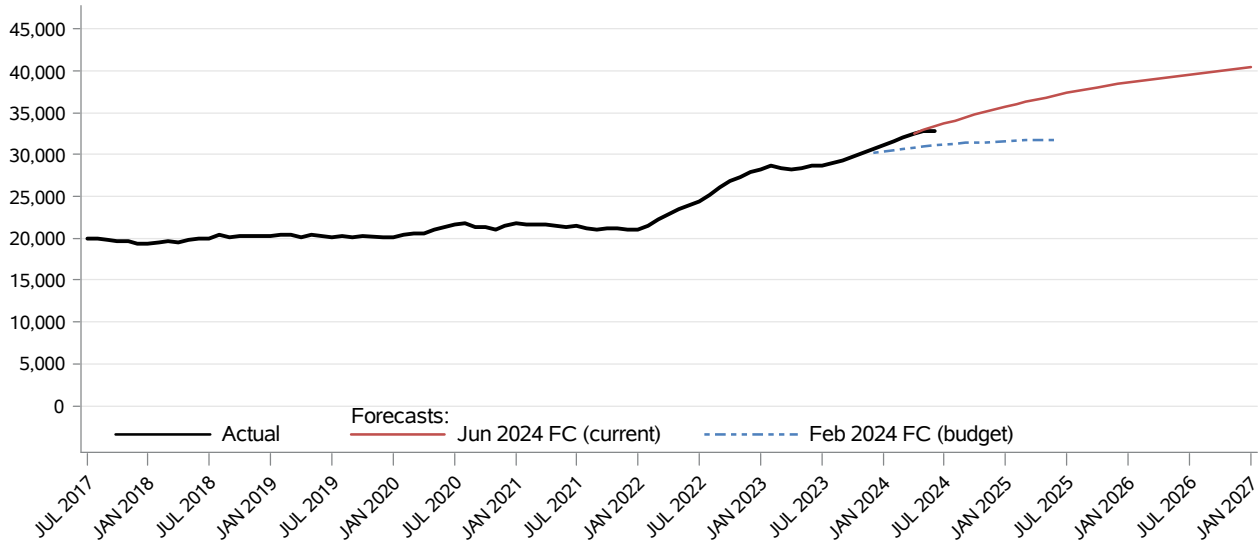


Economic Services Administration Blind and Disabled Assistance Grant - Total CFC Monthly Monitoring Report

The **Aged, Blind and Disabled Assistance** program provides financial assistance to persons whose long-term mental and/or physical disabilities likely qualify them for the federal Supplemental Security Income (SSI) program, regardless of citizenship status. This forecast includes the three components of this program: Presumptive SSI, Aged and Disabled.



Month	Actual	Forecasts		Budget Forecast and Variance			Current Forecast and Variance		
		Feb 2024	Jun 2024	Feb 2024	N	%	Jun 2024	N	%
JAN 2024	31,092	30,378		30,378	714	2.4%			
FEB 2024	31,612	30,567		30,567	1,045	3.4%			
MAR 2024	32,114	30,731		30,731	1,383	4.5%			
APR 2024	32,510	30,873	32,499	30,873	1,637	5.3%	32,499	11	0.0%
MAY 2024	32,855	30,997	32,905	30,997	1,858	6.0%	32,905	-50	(0.2%)
JUN 2024	32,765	31,103	33,297	31,103	1,662	5.3%	33,297	-532	(1.6%)
JUL 2024		31,196	33,676	31,196			33,676		
AUG 2024		31,290	34,055	31,290			34,055		
SEP 2024		31,373	34,419	31,373			34,419		
OCT 2024		31,447	34,772	31,447			34,772		
NOV 2024		31,514	35,114	31,514			35,114		
DEC 2024		31,571	35,444	31,571			35,444		

Data Source: DSHS ACES (last update: 08/19/2024)

Economic Services Administration
Blind and Disabled Assistance Grant - Total
CFC Monthly Monitoring Report

Descriptions:

- **Actual:** Cases, defined as units of one or more related individuals whose needs are covered by a single money grant, service or vendor payment. The data are lag adjusted and the most recent month of data is not shown.
- **Budget Forecast:** Caseload forecast adopted by the Caseload Forecast Council to serve as the basis for the biennial or supplemental budget. The actual budget may incorporate adjustments to this forecast to reflect legislation and policy decisions by the legislature subsequent to the development of the forecast.
- **Current Forecast:** Most recent forecast adopted by the Caseload Forecast Council; may be the same as the Budget Forecast.

Disclaimer of Liability:

Although the Washington State Caseload Forecast Council does all that it can to assure the accuracy of its forecasts and the data on which its forecasts are based, no warranty expressed or implied is made regarding accuracy, adequacy, completeness, legality, reliability, or usefulness of any information contained herein. This disclaimer applies to both isolated and aggregate uses of the information. If you find any errors or omissions, we encourage you to report them to the Caseload Forecast Council.