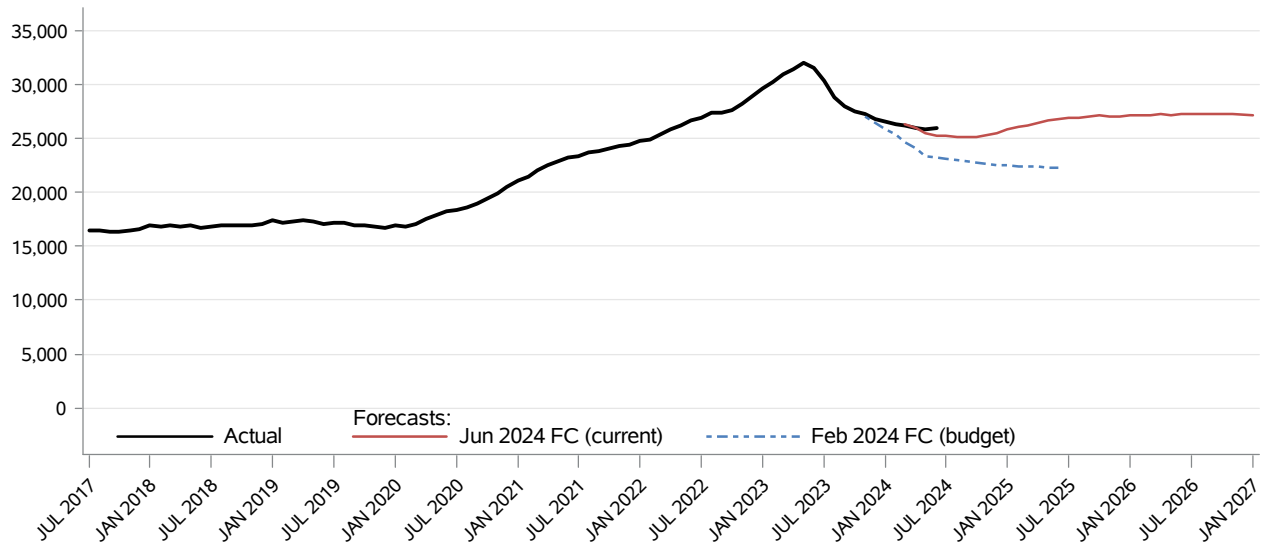


## Medical Services Categorically Needy Pregnant CFC Monthly Monitoring Report

The **Categorically Needy Pregnant** caseload includes pregnant women up to 185 percent of the Federal Poverty Level.



Month	Actual	Forecasts		Budget Forecast and Variance			Current Forecast and Variance		
		Feb 2024	Jun 2024	Feb 2024	N	%	Jun 2024	N	%
JAN 2024	26,613	25,913		25,913	700	2.7%			
FEB 2024	26,337	25,374		25,374	963	3.8%			
MAR 2024	26,257	24,743	26,384	24,743	1,514	6.1%	26,384	-127	( 0.5%)
APR 2024	25,949	24,094	26,047	24,094	1,855	7.7%	26,047	-98	( 0.4%)
MAY 2024	25,863	23,444	25,578	23,444	2,419	10.3%	25,578	285	1.1%
JUN 2024	25,951	23,274	25,320	23,274	2,677	11.5%	25,320	631	2.5%
JUL 2024		23,151	25,254	23,151			25,254		
AUG 2024		23,040	25,214	23,040			25,214		
SEP 2024		22,908	25,113	22,908			25,113		
OCT 2024		22,801	25,190	22,801			25,190		
NOV 2024		22,655	25,357	22,655			25,357		
DEC 2024		22,560	25,521	22,560			25,521		

Data Source: HCA Provider One (last update: 09/09/2024)

**Medical Services**  
**Categorically Needy Pregnant**  
CFC Monthly Monitoring Report

Descriptions:

- **Actual:** The number of clients eligible at any time during the month and are lag adjusted up to 24 months and the most recent two months of data are not shown.
- **Budget Forecast:** Caseload forecast adopted by the Caseload Forecast Council to serve as the basis for the biennial or supplemental budget. The actual budget may incorporate adjustments to this forecast to reflect legislation and policy decisions by the legislature subsequent to the development of the forecast.
- **Current Forecast:** Most recent forecast adopted by the Caseload Forecast Council; may be the same as the Budget Forecast.

**Disclaimer of Liability:**

Although the Washington State Caseload Forecast Council does all that it can to assure the accuracy of its forecasts and the data on which its forecasts are based, no warranty expressed or implied is made regarding accuracy, adequacy, completeness, legality, reliability, or usefulness of any information contained herein. This disclaimer applies to both isolated and aggregate uses of the information. If you find any errors or omissions, we encourage you to report them to the Caseload Forecast Council.