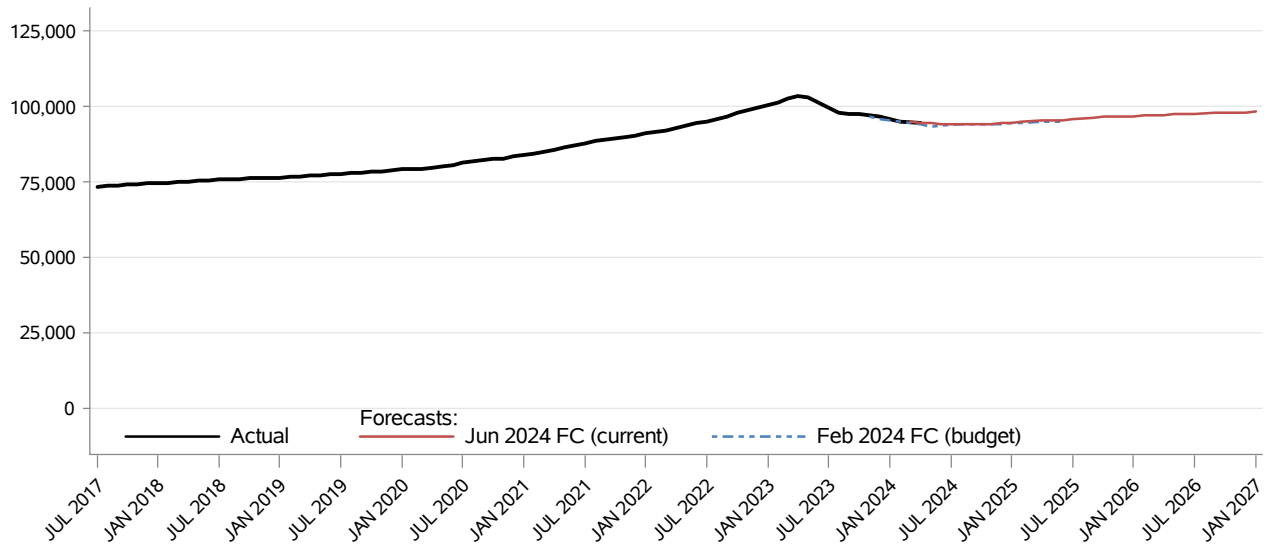


Medical Services Categorically Needy Aged CFC Monthly Monitoring Report

The **Categorically Needy Aged** program provides medical assistance for persons age 65 and over with income and resources below federal Supplemental Security Income (SSI) limits.



Month	Actual	Forecasts		Budget Forecast and Variance			Current Forecast and Variance		
		Feb 2024	Jun 2024	Feb 2024	N	%	Jun 2024	N	%
NOV 2023	96,995	96,491		96,491	504	0.5%			
DEC 2023	96,664	95,848		95,848	816	0.9%			
JAN 2024	95,934	95,387		95,387	547	0.6%			
FEB 2024	95,083	94,841		94,841	242	0.3%			
MAR 2024	94,932	94,457	95,094	94,457	475	0.5%	95,094	-162	(0.2%)
APR 2024	94,784	94,027	94,646	94,027	757	0.8%	94,646	138	0.1%
MAY 2024		93,497	94,548	93,497			94,548		
JUN 2024		93,541	94,239	93,541			94,239		
JUL 2024		93,753	94,174	93,753			94,174		
AUG 2024		93,958	94,173	93,958			94,173		
SEP 2024		94,060	94,160	94,060			94,160		
OCT 2024		94,241	94,317	94,241			94,317		

Data Source: HCA Provider One (last update: 07/08/2024)

Medical Services
Categorically Needy Aged
CFC Monthly Monitoring Report

Descriptions:

- **Actual:** The number of clients eligible at any time during the month and are lag adjusted up to 24 months and the most recent two months of data are not shown.
- **Budget Forecast:** Caseload forecast adopted by the Caseload Forecast Council to serve as the basis for the biennial or supplemental budget. The actual budget may incorporate adjustments to this forecast to reflect legislation and policy decisions by the legislature subsequent to the development of the forecast.
- **Current Forecast:** Most recent forecast adopted by the Caseload Forecast Council; may be the same as the Budget Forecast.

Disclaimer of Liability:

Although the Washington State Caseload Forecast Council does all that it can to assure the accuracy of its forecasts and the data on which its forecasts are based, no warranty expressed or implied is made regarding accuracy, adequacy, completeness, legality, reliability, or usefulness of any information contained herein. This disclaimer applies to both isolated and aggregate uses of the information. If you find any errors or omissions, we encourage you to report them to the Caseload Forecast Council.