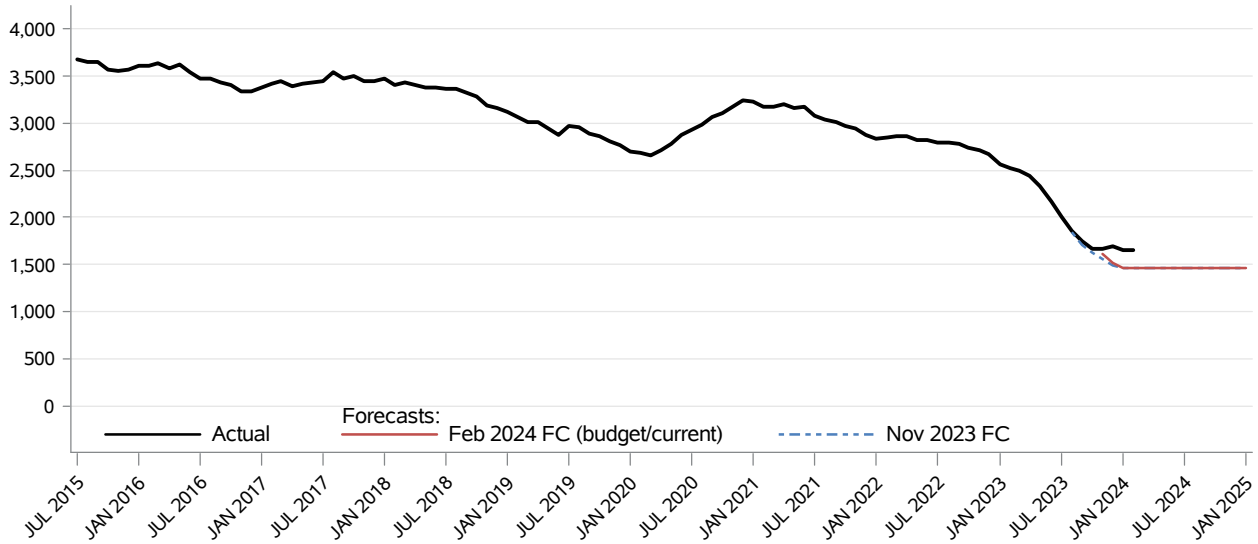


Medical Services Medically Needy Blind and People with Disabilities CFC Monthly Monitoring Report

The **Medically Needy Blind and People with Disabilities** program provides medical assistance to persons who are dually eligible for Medicare and Medicaid who meet federal disability or sight loss criteria and have insufficient funds to pay their medical bills, but whose income and resources are too high for them to qualify as Categorically Needy.



Month	Actual	Forecasts		Budget/Current Forecast and Variance		
		Nov 2023	Feb 2024	Feb 2024	N	%
SEP 2023	1,750	1,706				
OCT 2023	1,662	1,622				
NOV 2023	1,673	1,554	1,607	1,607	66	4.1%
DEC 2023	1,696	1,494	1,510	1,510	186	12.3%
JAN 2024	1,653	1,468	1,468	1,468	185	12.6%
FEB 2024	1,646	1,468	1,468	1,468	178	12.1%
MAR 2024		1,468	1,468	1,468		
APR 2024		1,468	1,468	1,468		
MAY 2024		1,468	1,468	1,468		
JUN 2024		1,468	1,468	1,468		
JUL 2024		1,468	1,468	1,468		
AUG 2024		1,468	1,468	1,468		

Data Source: HCA Provider One (last update: 05/20/2024)

Medical Services
Medically Needy Blind and People with Disabilities
CFC Monthly Monitoring Report

Descriptions:

- **Actual:** The number of clients eligible at any time during the month and are lag adjusted up to 24
- **Budget Forecast:** Caseload forecast adopted by the Caseload Forecast Council to serve as the basis for the biennial or supplemental budget. The actual budget may incorporate adjustments to this forecast to reflect legislation and policy decisions by the legislature subsequent to the development of the forecast.
- **Current Forecast:** Most recent forecast adopted by the Caseload Forecast Council; may be the same as the Budget Forecast.

Disclaimer of Liability:

Although the Washington State Caseload Forecast Council does all that it can to assure the accuracy of its forecasts and the data on which its forecasts are based, no warranty expressed or implied is made regarding accuracy, adequacy, completeness, legality, reliability, or usefulness of any information contained herein. This disclaimer applies to both isolated and aggregate uses of the information. If you find any errors or omissions, we encourage you to report them to the Caseload Forecast Council.